

# Indices of Multiple Deprivation Ipswich

Overview & Scrutiny  
Task & Finish Group - Health Profile  
March 2016

# Suffolk Context

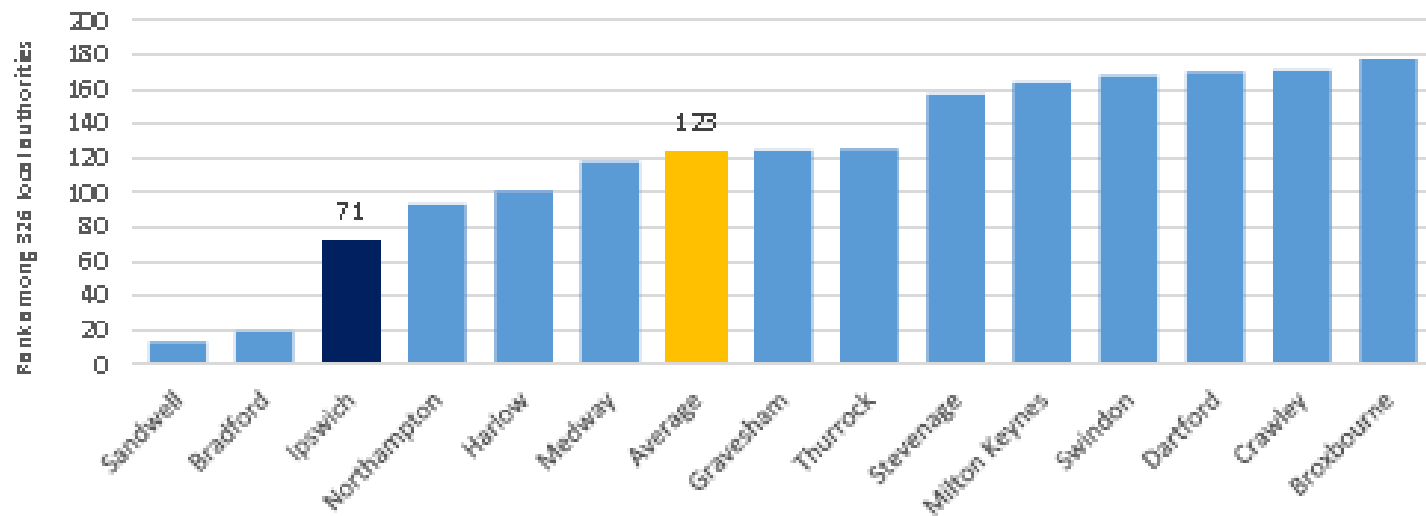
- **Suffolk has become more deprived** compared to other local authorities in England since the last IMD in 2010. Only three counties/unitary authorities worsened by more places in the rankings than Suffolk. However, Suffolk continues to experience below average levels of deprivation.
- **All Suffolk local authorities have become more deprived** compared to other districts and boroughs in England since 2010. Forest Heath has seen an especially sharp increase in relative deprivation in contrast to its statistical neighbours, so is of particular concern.
- Suffolk and our **districts and boroughs are also becoming more deprived relative to their statistical neighbours** (geographic areas grouped together according to key characteristics common to the population in that grouping).

# Suffolk Context

- The relative increase in deprivation is predominantly due to issues in four of the IMD domains:
  - a. Education, skills and training deprivation:** poor educational attainment and low skill levels among adults have become priorities for improvement in Suffolk – this domain of the IMD reflects the poor performance in this area.
  - b. Barriers to housing and services:** this domain now includes a measure of inability to enter the private rental market, which is an issue in parts of rural Suffolk due to high rent prices.
  - c. Crime: Suffolk is still a relatively** low crime county, but the IMD suggests that our ranking in this area compared to other counties and unitary authorities within England has worsened.
  - d. Health deprivation and disability.**

- Ipswich has seen its rank worsen by 12 places from 83rd in 2010 to 71st in 2015, indicating increased deprivation relative to other local authorities in England, while it remains the third most deprived authority in its statistical neighbour group.
- Within the group of 14 authorities, 11 have seen an increase in relative deprivation since 2010. The three most deprived authorities; Sandwell, Bradford and Ipswich, maintain their positions though the former two are by some margin the most deprived in the group. Broxbourne keeps its place as the least deprived authority in the group despite seeing an increase in relative deprivation of 30 places.

Ipswich with statistical neighbours 2015



# Health Profile Ipswich

Items where Ipswich is significantly worse than England average

1. Deprivation	-	IMD Composite Rank
2. Children in Poverty	-	Income
4. GCSE achieved	-	Education and Skills
17. Hospital Stays for Self Harm	-	Health
5. Violent Crime Offences	-	Crime
6. Long term Unemployment	-	Employment

Items where Ipswich is worse, but not significantly so, than England average

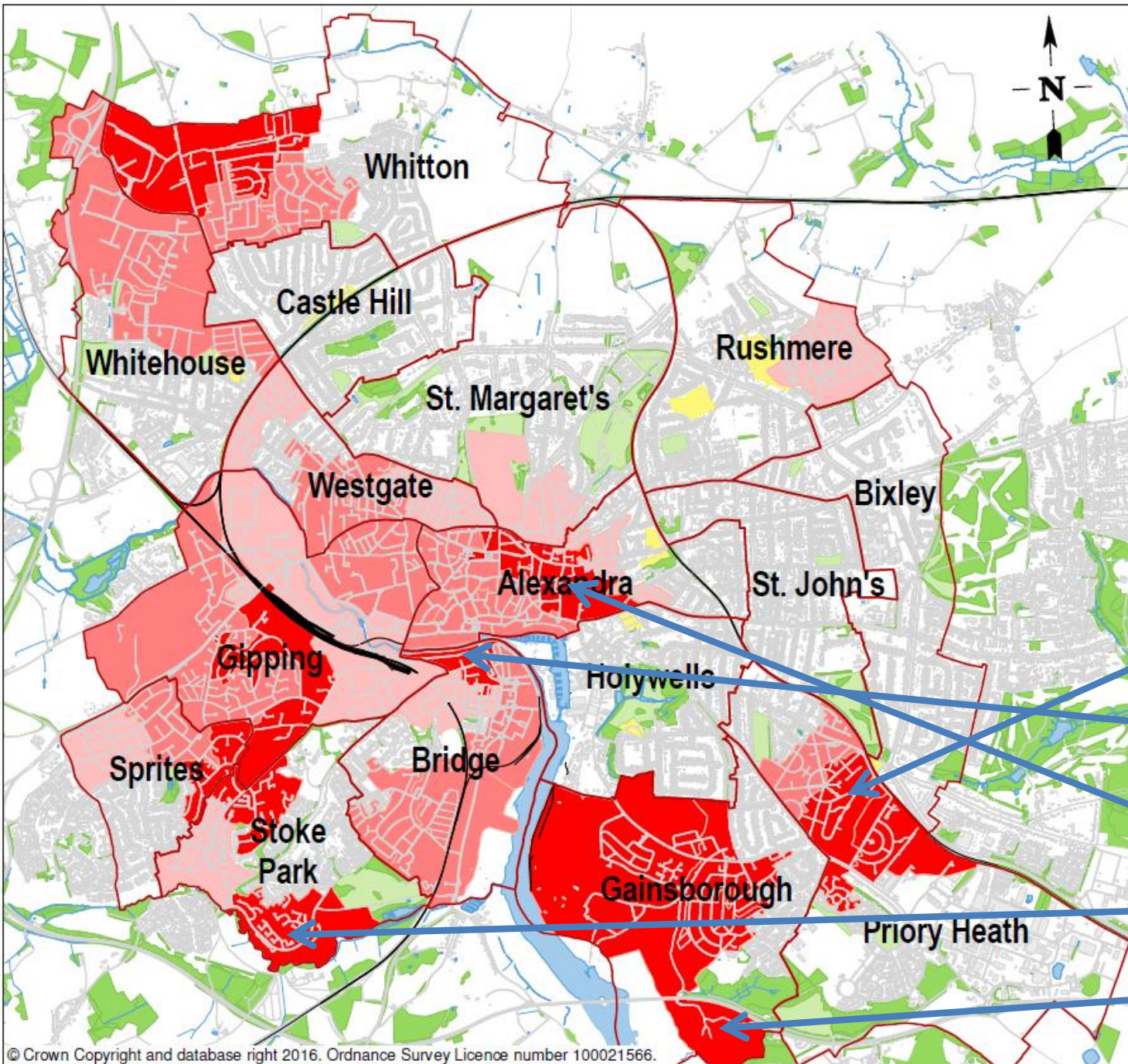
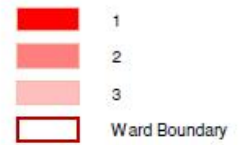
11. Under 18 Conceptions	-	Health
12. Smoking Prevalence	-	Health
15. Excess Weight in Adults	-	Health
24. Excess Winter Deaths	-	Health



**IPSWICH**  
BOROUGH COUNCIL

## IMD 2015

Local Areas in the Lowest 30%  
of the Deprivation Rankings



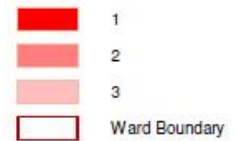
- Priory Heath  
1,224 / 32,482
- Bridge  
1,398 / 32,482
- Alexandra  
1,523 / 32,482
- Stoke Park  
1,728 / 32,482
- Gainsborough  
1,792 / 32,482



**IPSWICH**  
BOROUGH COUNCIL

### Sum of Health Deprivation and Disability Decile IMD 2015

Local Areas in the Lowest 30%  
of the Deprivation Rankings

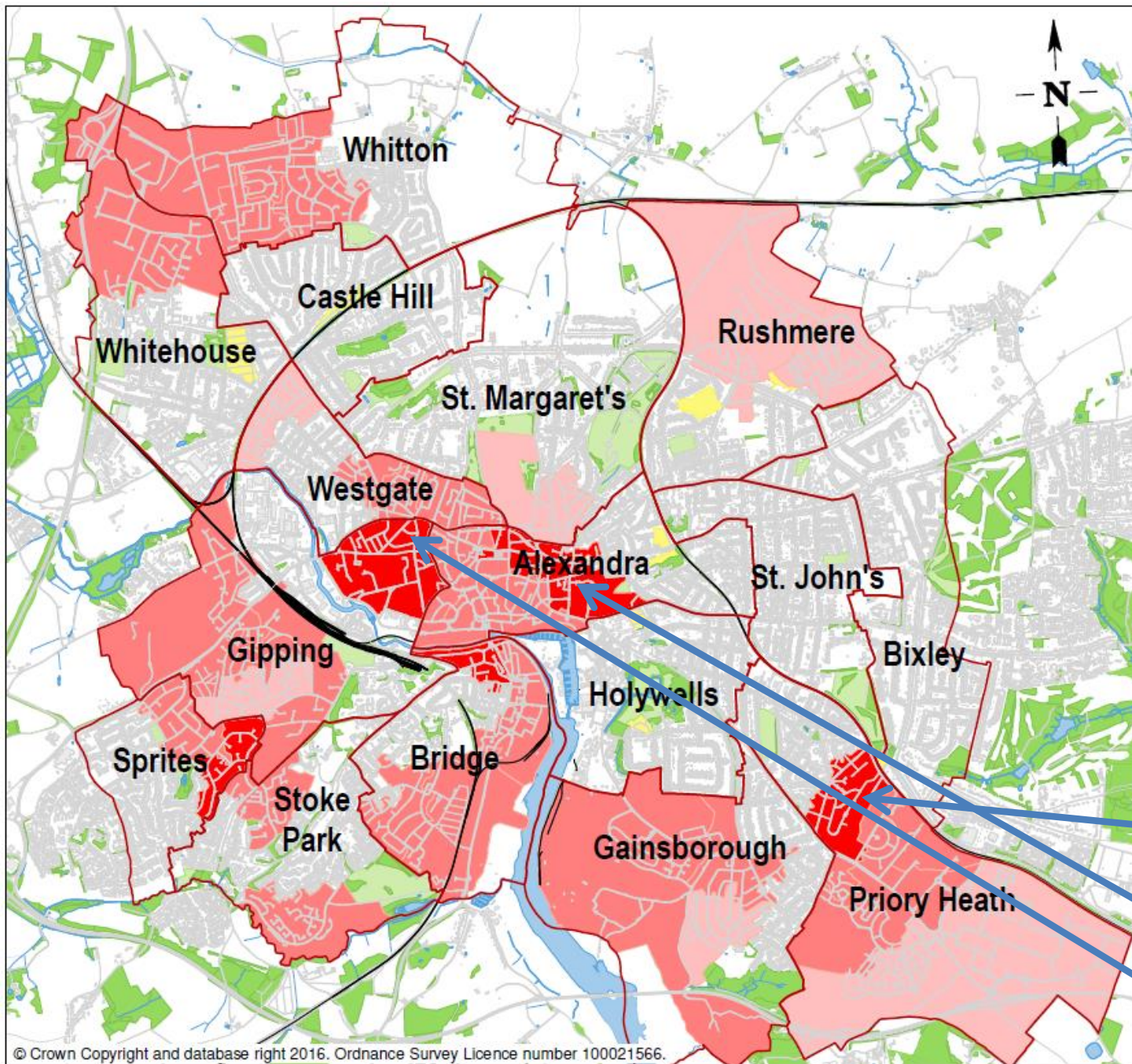


Domain Weight  
to IMD 13.5%

Priory Heath  
1,890 / 32,482

Alexandra  
2,478 / 32,482

Gipping  
2,829 / 32,482

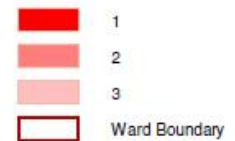




IPSWICH  
BOROUGH COUNCIL

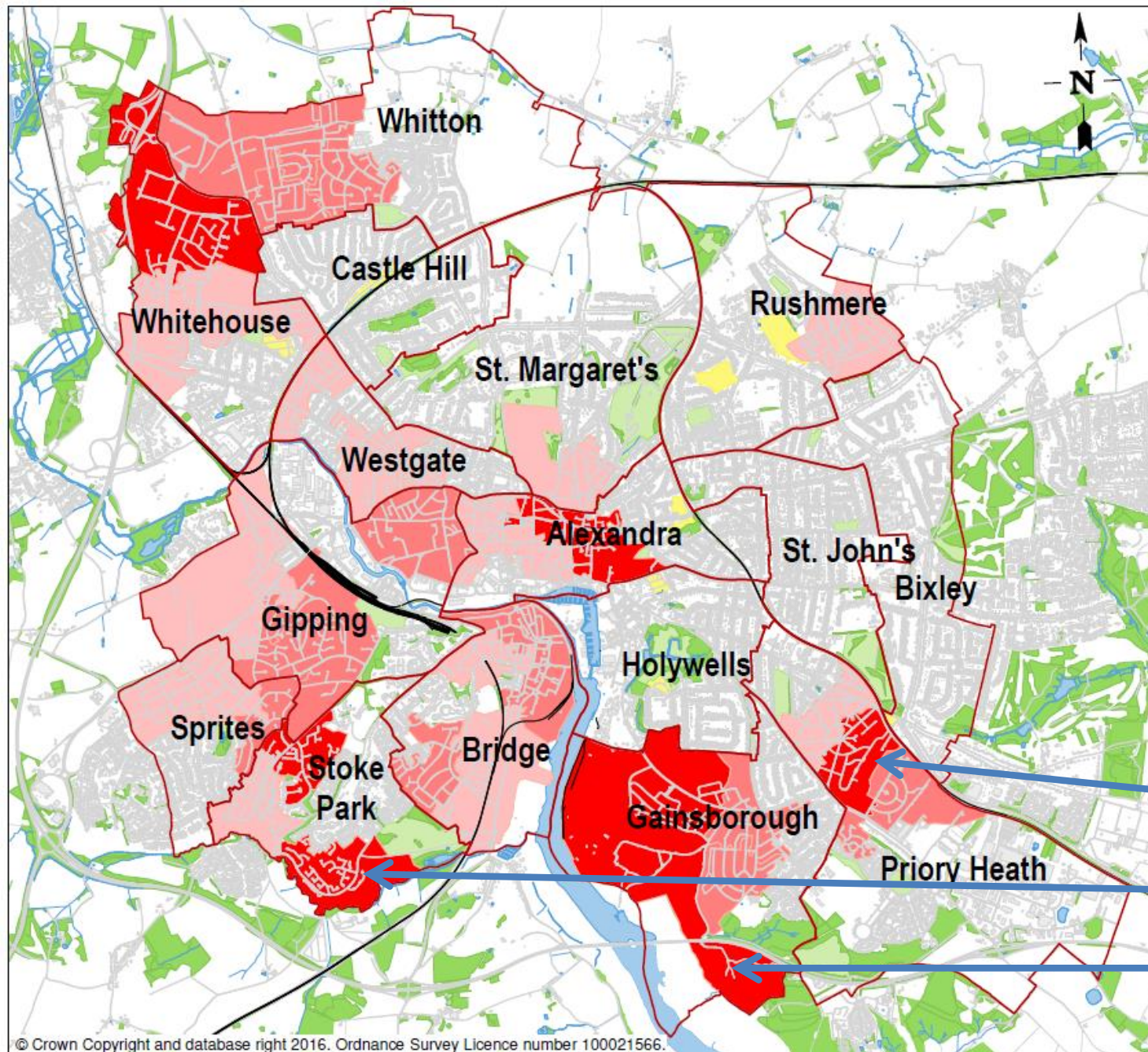
## Sum of Income Decile IMD 2015

Local Areas in the Lowest 30%  
of the Deprivation Rankings



Domain Weight  
to IMD 22.5%

Priory Heath  
1,517 / 32,482  
Stoke Park  
1,886 / 32,382  
Gainsborough  
2,379 / 32,482  
Whitton







**IPSWICH**  
BOROUGH COUNCIL

## Sum of Education, Skills and Training Decile IMD 2015

Local Areas in the Lowest 30%  
of the Deprivation Rankings

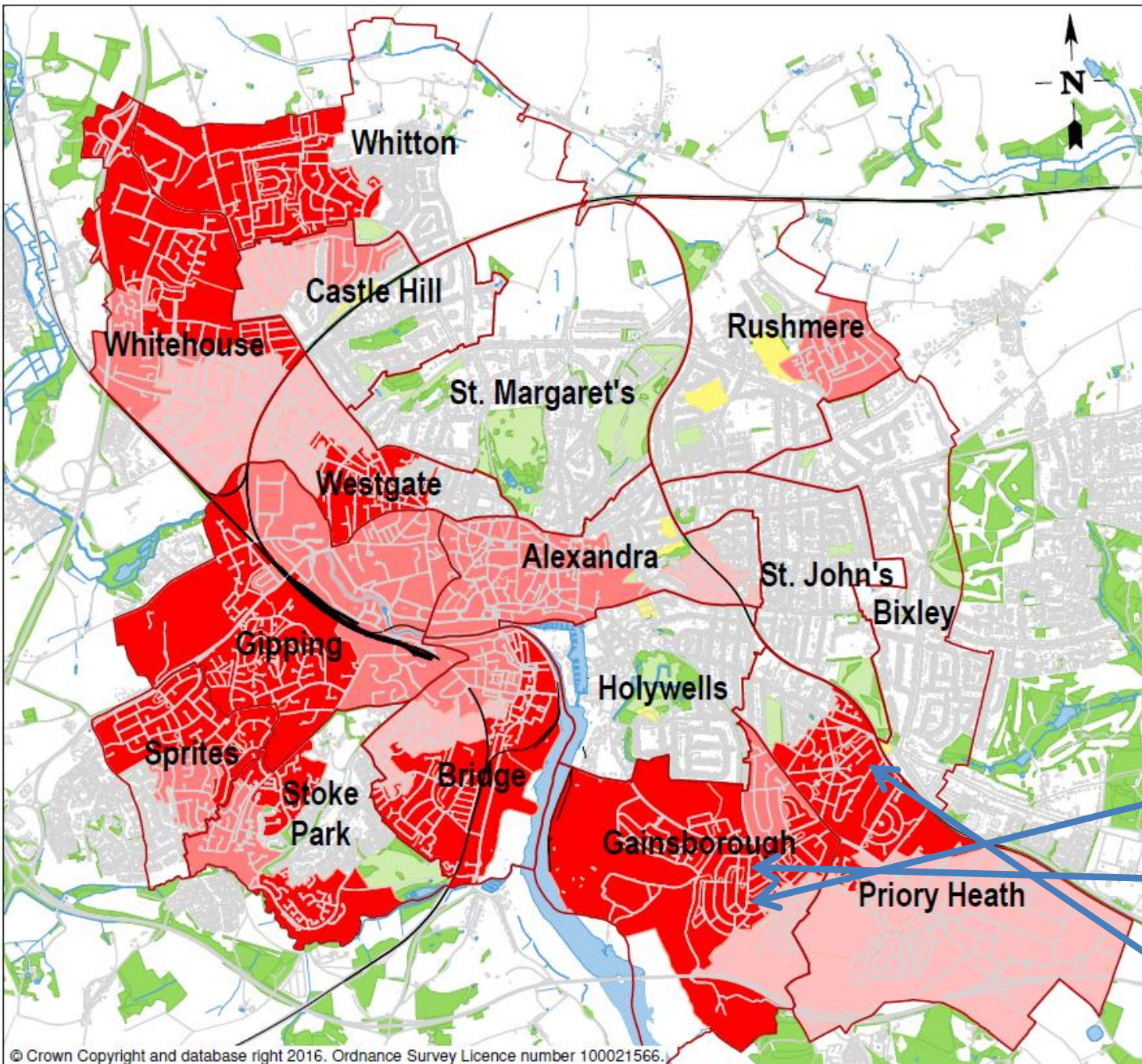


Domain Weight  
to IMD 13.5%

Gainsborough  
25 / 32,482

Gainsborough  
76 / 32,382

Priory Heath  
95 / 32,482

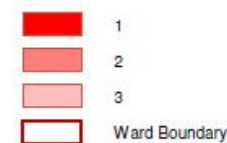




IPSWICH  
BOROUGH COUNCIL

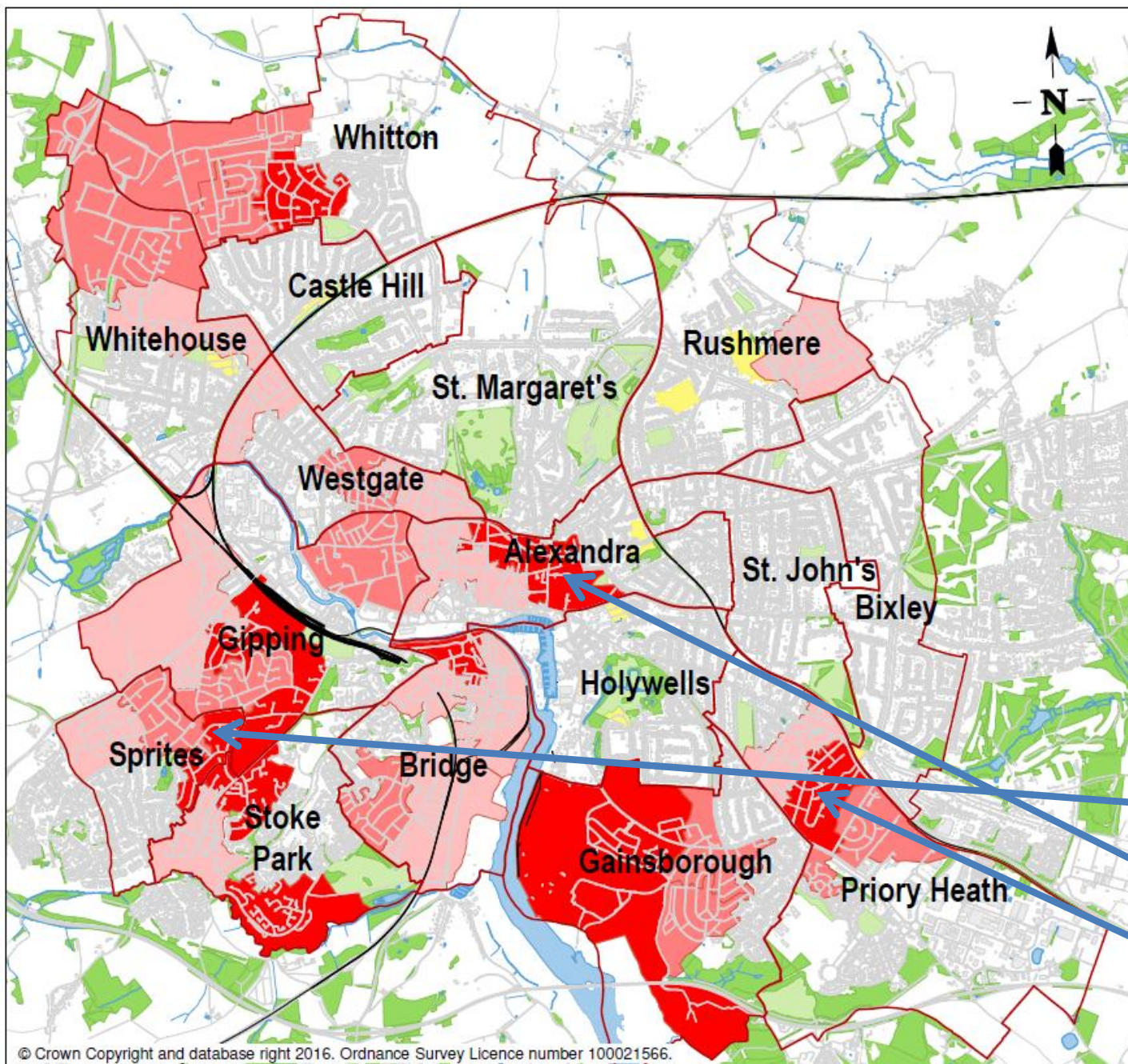
## Sum of Employment Decile IMD 2015

Local Areas in the Lowest 30%  
of the Deprivation Rankings



Domain Weight  
to IMD 13.5%

- Sprites  
1,092 / 32,482
- Alexandra  
1,415 / 32,382
- Priory Heath  
1,690 / 32,482

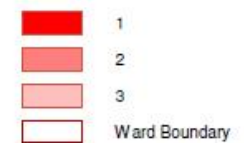




**IPSWICH**  
BOROUGH COUNCIL

## Sum of Crime Decile IMD 2015

Local Areas in the Lowest 30%  
of the Deprivation Rankings

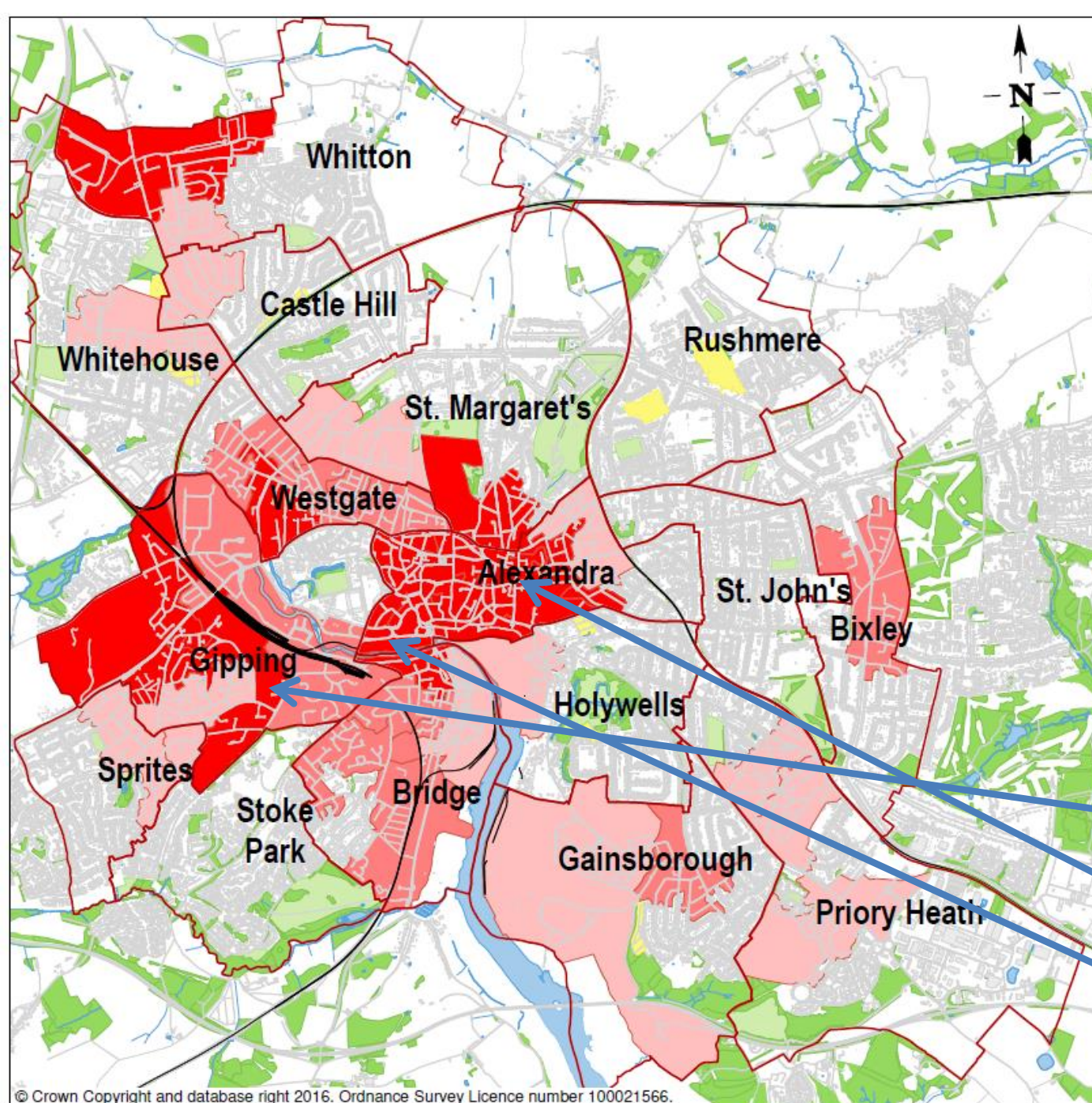


Domain Weight  
to IMD 9.3%

Gipping  
514 / 32,482

Alexandra  
542 / 32,382

Alexandra  
1,107 / 32,482

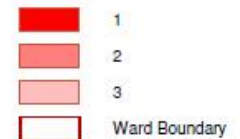




**IPSWICH**  
BOROUGH COUNCIL

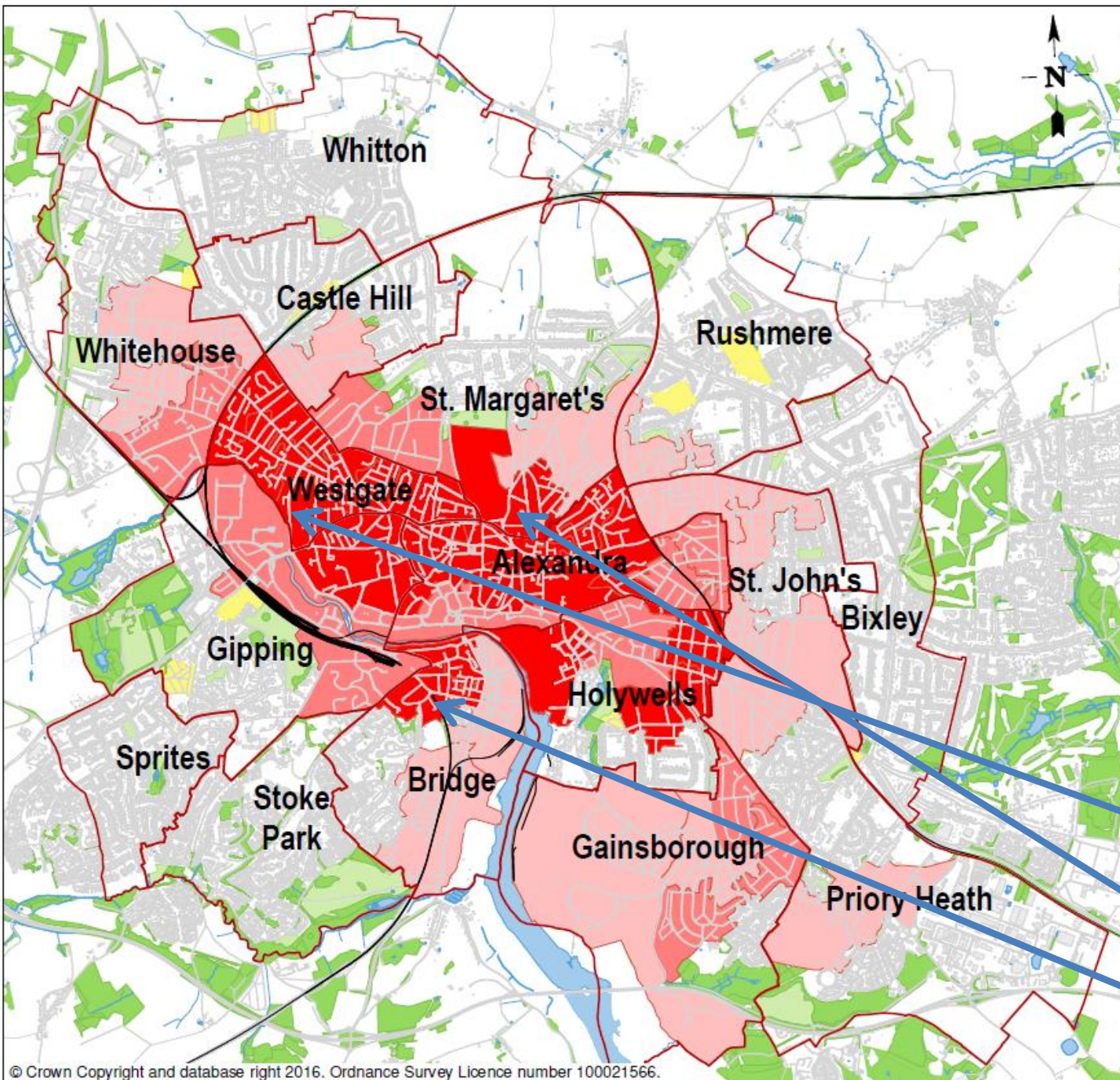
## Sum of Living Environment Decile IMD 2015

Local Areas in the Lowest 30%  
of the Deprivation Rankings



Domain Weight  
to IMD 13.5%

- Westgate  
441 / 32,482
- St Margaret's  
556 / 32,382
- Bridge  
575 / 32,482

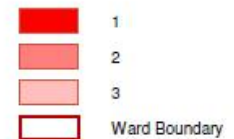




**IPSWICH**  
BOROUGH COUNCIL

## Sum of Barriers to Housing and Services Decile IMD 2015

Local Areas in the Lowest 30%  
of the Deprivation Rankings

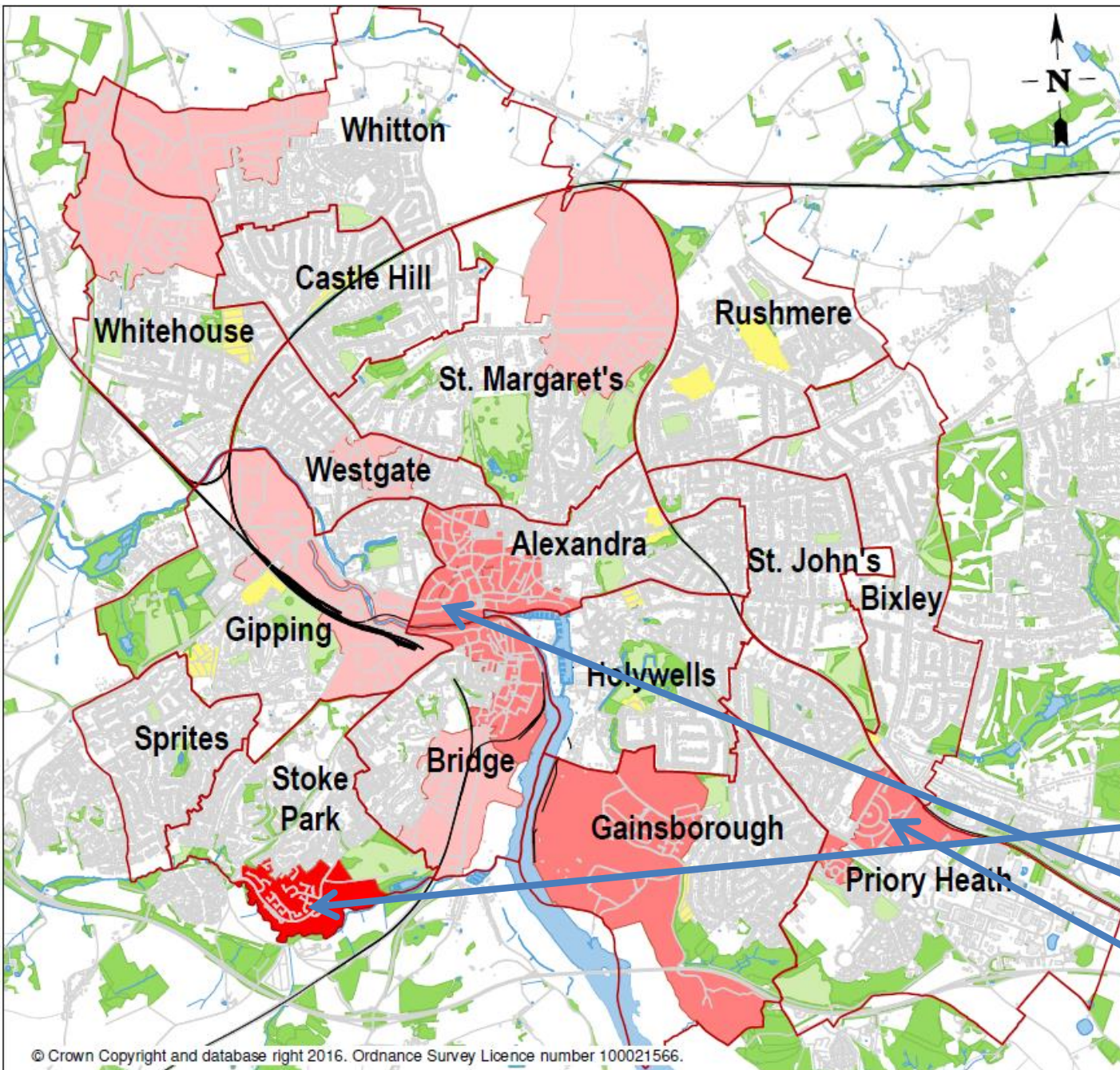


Domain Weight  
to IMD 13.5%

Stoke Park  
1,192 / 32,482

Alexandra  
3,506 / 32,382

Priory heath  
4,238 / 32,482



# Health Profile Ipswich

The order for Domains of Deprivation to focus on in Ipswich

1. Education
2. Income
3. Living Environment
4. Crime
5. Employment
6. Health
  
7. Barriers to Housing