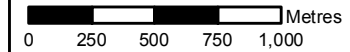
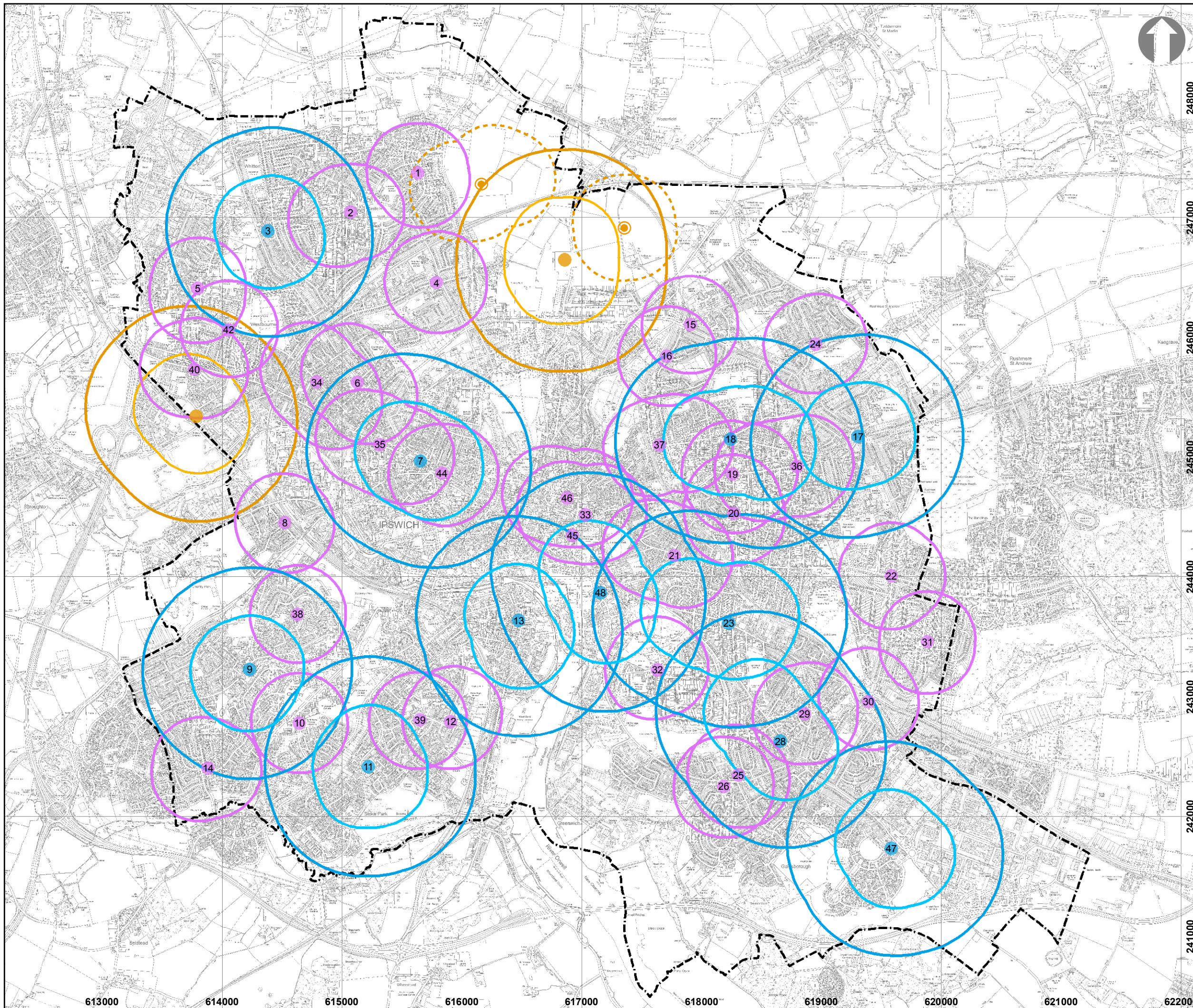
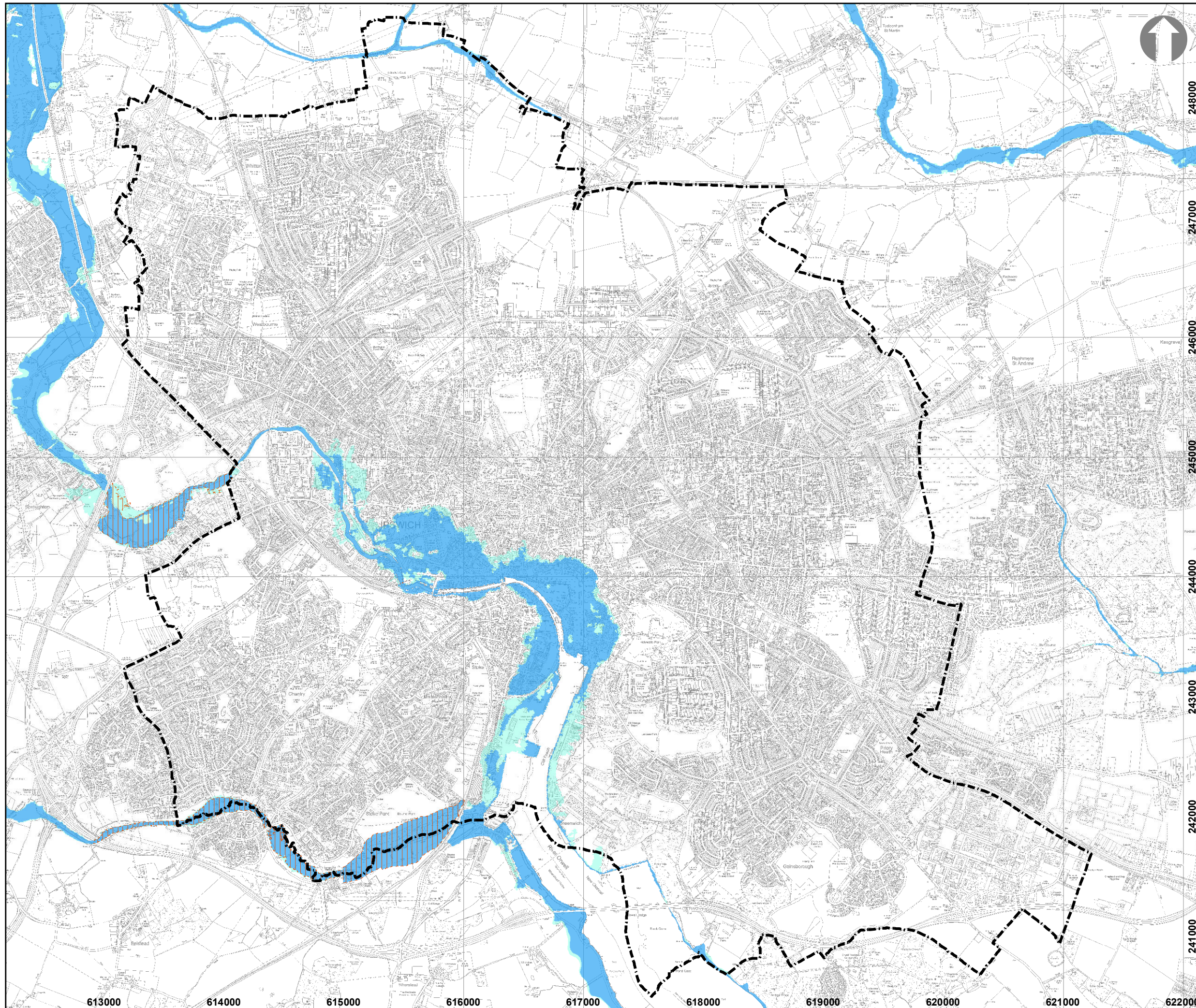


**IPSWICH PROPOSED SUBMISSION  
(REGULATION 19) LOCAL PLAN  
Plan 1: District and  
Local Centres  
September 2015**



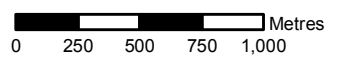
- Location of Existing District Centre
- Location of Existing Local Centre
- Location of Proposed District Centre
- Location of Proposed Local Centre
- Existing District Centre 800m buffer
- Existing District Centre 400m buffer
- Existing Local Centre 400m buffer
- Proposed District Centre 800m buffer
- Proposed District Centre 400m buffer
- Proposed Local Centre 400m buffer
- Ipswich Borough Boundary



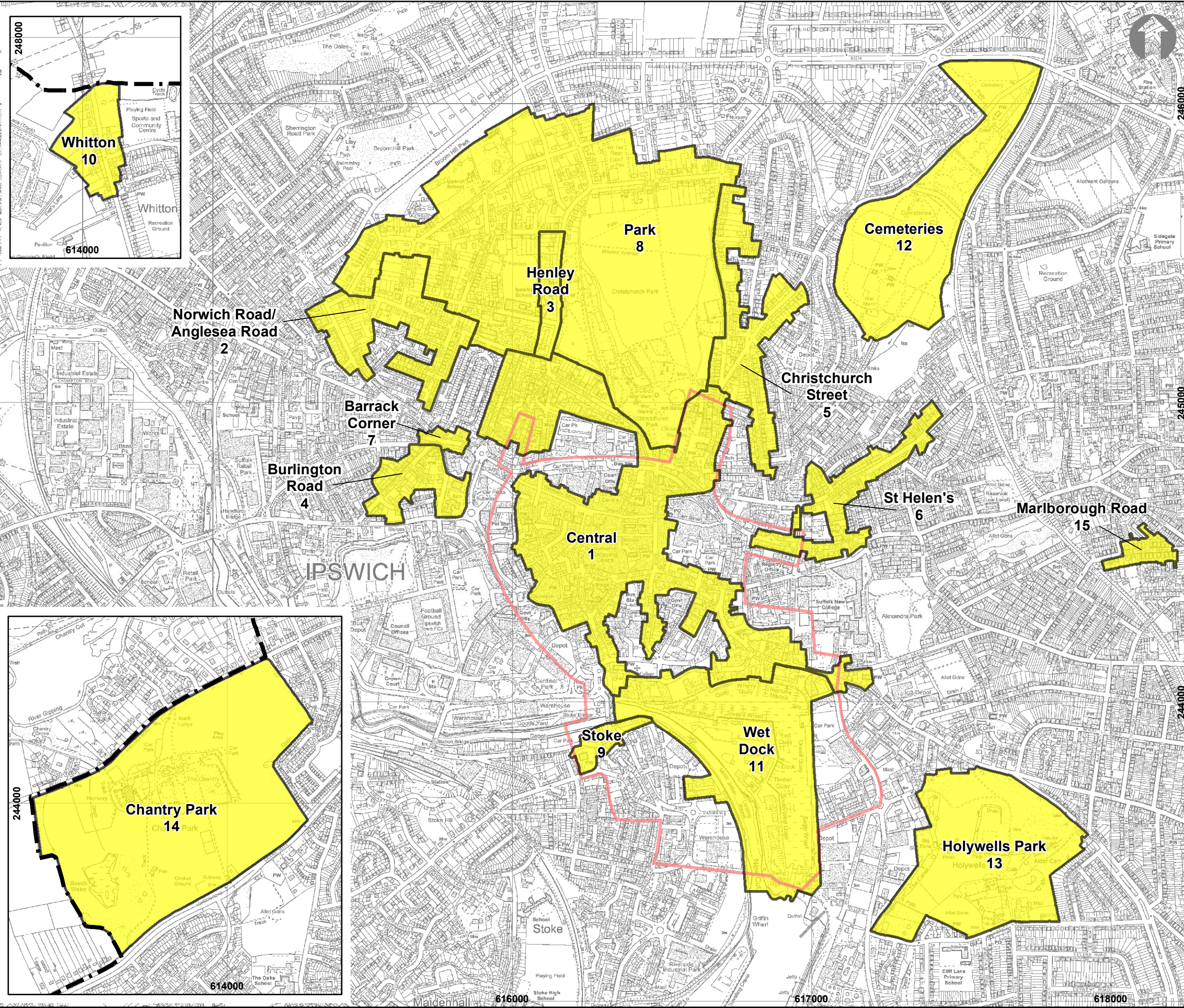


**IPSWICH PROPOSED SUBMISSION  
(REGULATION 19) LOCAL PLAN  
Plan 2: Flood Risk  
(including Modifications)  
September 2015**

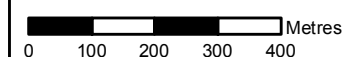
- National Floodzone 2 (v201508)
- National Floodzone 3 (v201508)
- Functional Flood Plain - Floodzone 3b
- Ipswich Borough Boundary





**IPSWICH PROPOSED SUBMISSION  
(REGULATION 19) LOCAL PLAN  
Plan 3: Conservation Areas  
(including Modifications)**  
September 2015

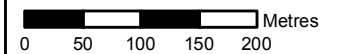
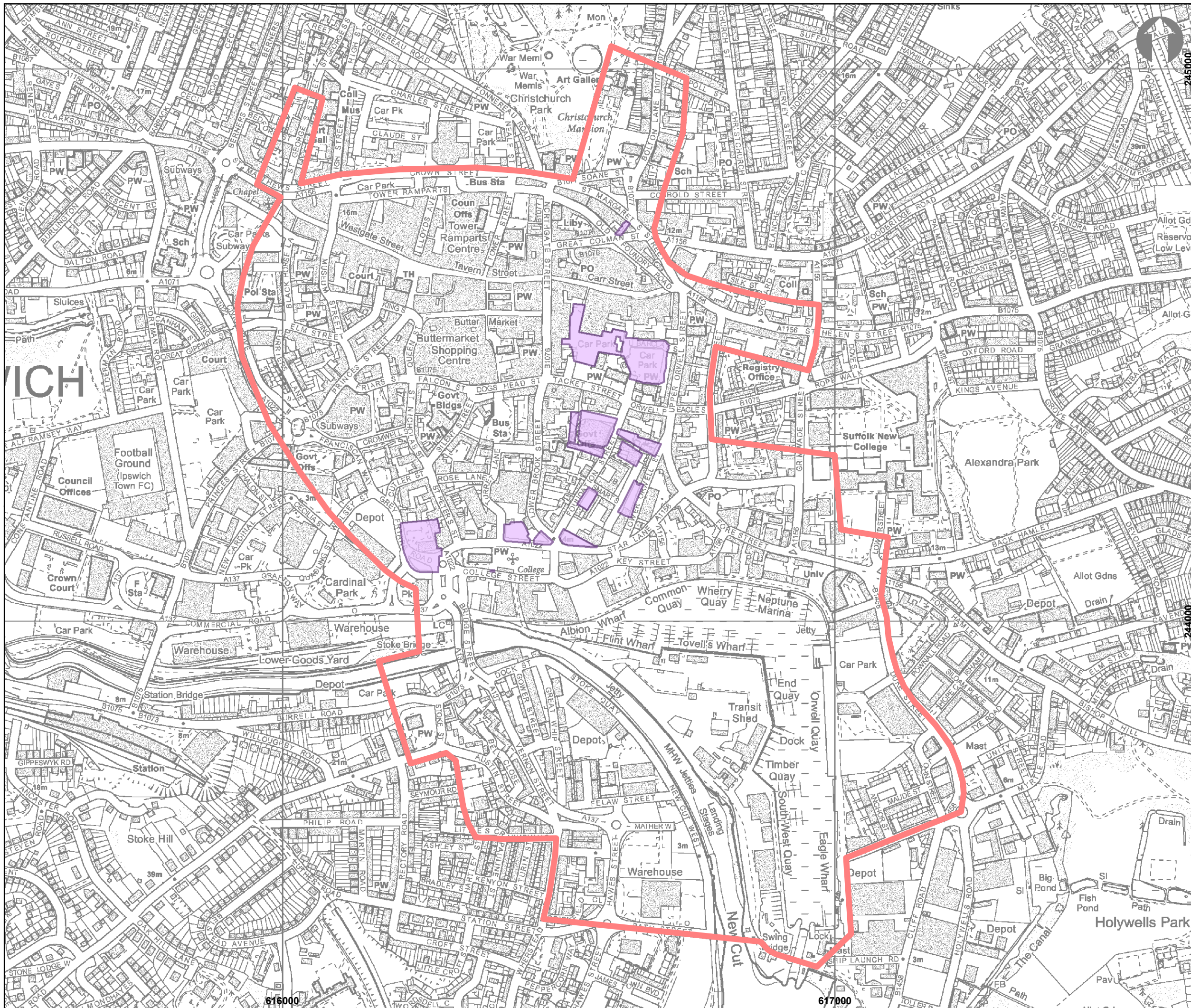


- Conservation Areas
- Area of Archaeological Importance
- Ipswich Borough Boundary

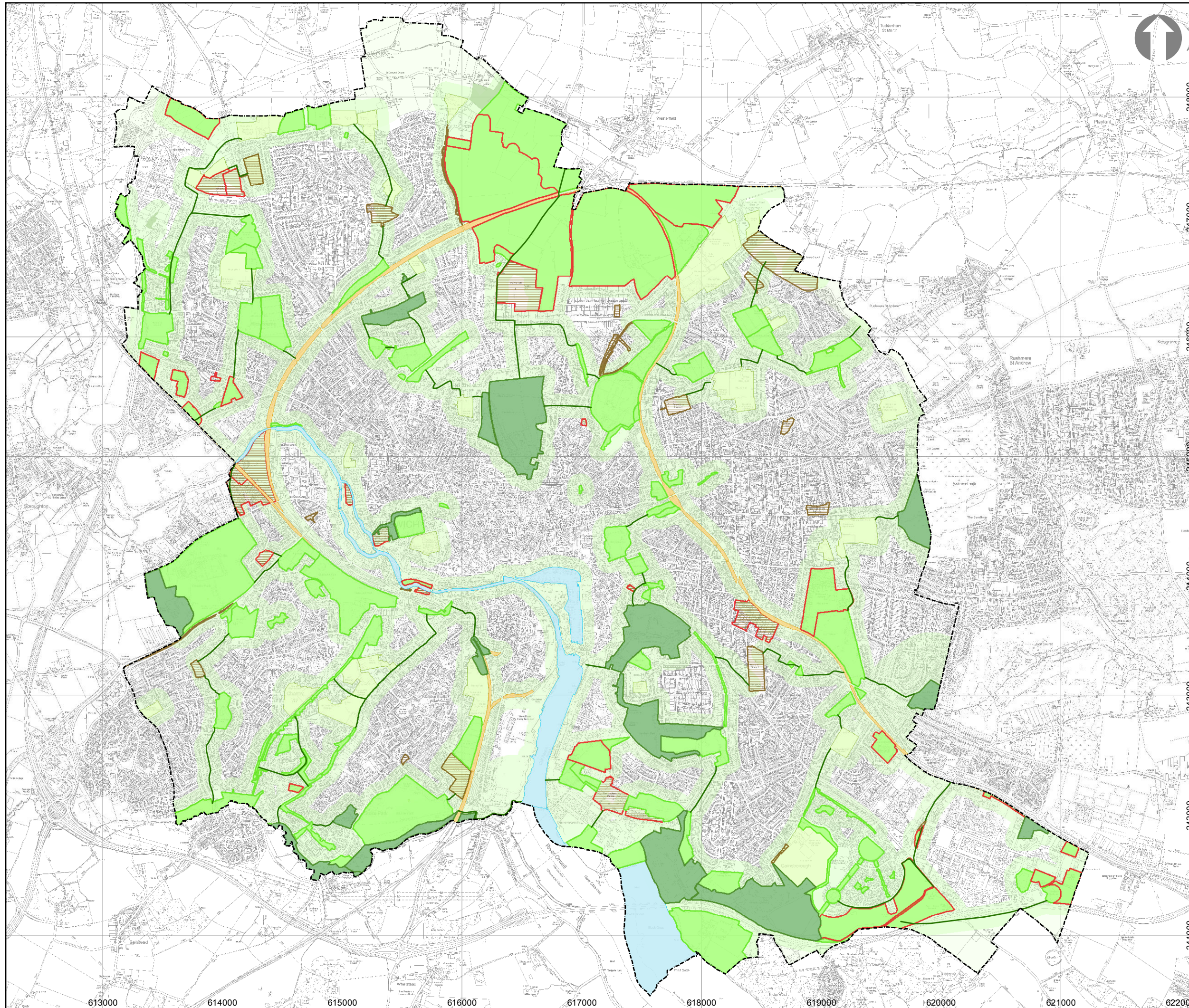


**IPSWICH PROPOSED SUBMISSION  
(REGULATION 19) LOCAL PLAN  
Plan 4: Area of  
Archaeological Importance  
September 2015**

-  Area of Archaeological Importance
-  Scheduled Ancient Monument



**IPSWICH PROPOSED SUBMISSION  
(REGULATION 19) LOCAL PLAN  
Plan 5: Ipswich  
Ecological Network  
September 2015**



**Core Areas**

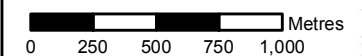
- Rank 1 - 2. High Conservation Value (SPA/RAMSAR & SSSI 400m buffer; CWS 100m)
- Rank 3 - 4. Medium Conservation Value (100m buffer)
- Potential Development site with wildlife (100m buffer)
- Rank 5 - 6. Low Conservation Value interest Rank 1-4
- Potential Development site with wildlife interest Rank 5 or below
- Probable sites - no current rank available\*

**Corridors**

- Railway corridors
- River sites (SPA/RAMSAR, SSSI & CWS)
- Existing Playing Fields
- Corridor - Aspirational Links
- Green Rim Indicative - links to be explored with neighbouring Authorities (no buffer)
- Ipswich Borough Boundary






\* Probable sites have not currently been assessed but could have wildlife value

Ranks refer to the Ipswich Wildlife Audit 2012-13 (All buffers 100m unless otherwise stated)



**IPSWICH  
BOROUGH COUNCIL**

**IPSWICH PROPOSED SUBMISSION  
(REGULATION 19) LOCAL PLAN  
Plan 6 Green Corridors  
(including Modifications)  
September 2015**

-  Green Corridor  
(Policy DM33 - A to I)
-  River Corridor  
(Policy DM33 - J)
-  Existing Open Space, Playing  
Fields or Allotments
-  Indicative Green Rim  
(Policy DM33 - K)
-  Ipswich Borough Boundary

