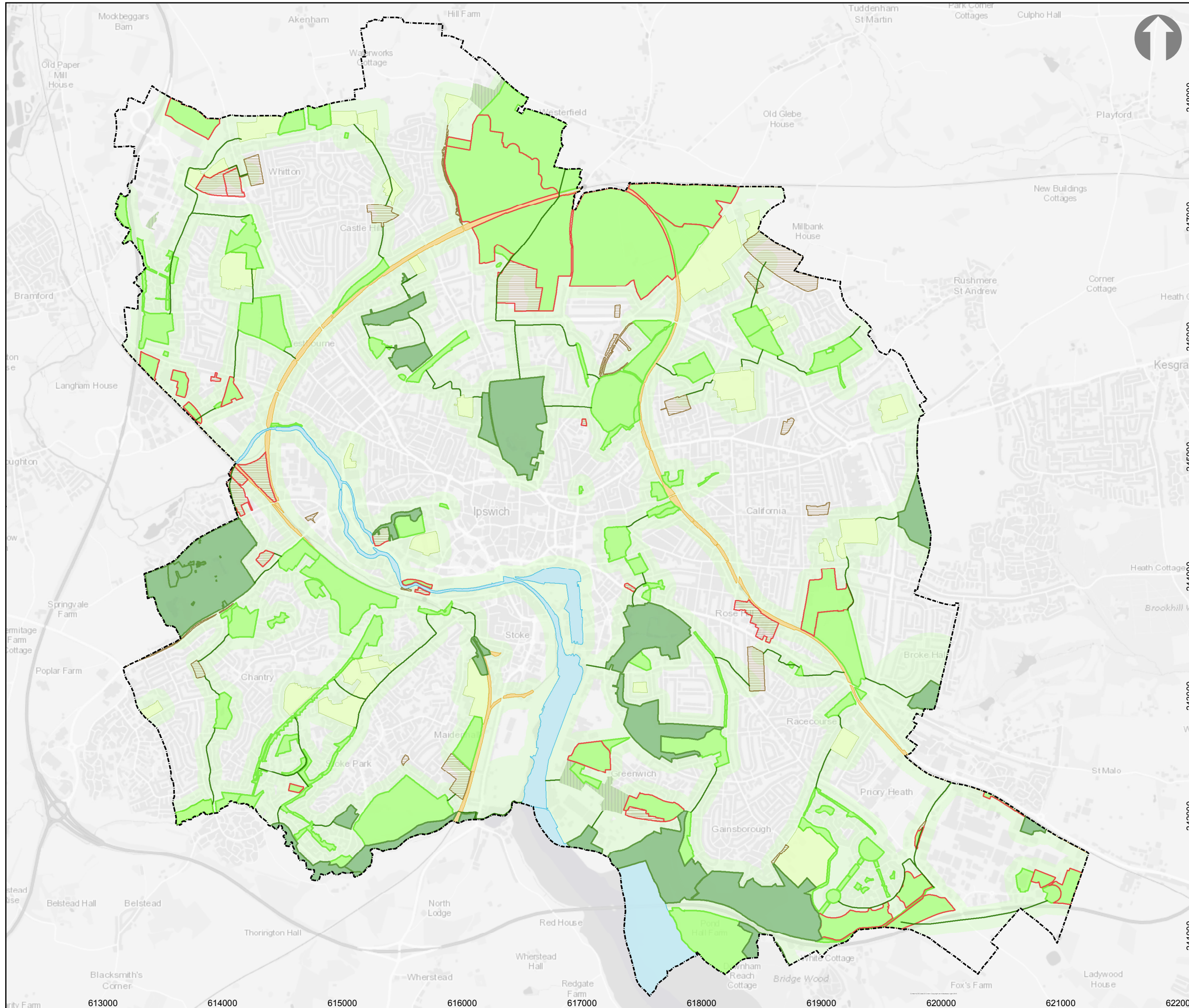


# Plan 5: Ipswich Ecological Network

Adopted 22nd February 2017



**Core Areas**

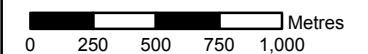
- Rank 1 - 2. High Conservation Value (SPA/Ramsar & SSSI 400m buffer; CWS 100m)
- Rank 3 - 4. Medium Conservation Value (100m buffer)
- Potential Development site with wildlife interest Rank 1 - 4 (100m buffer)
- Rank 5 - 6. Low Conservation Value
- Potential Development site with wildlife interest Rank 5 or below
- Probable site - no current rank available\*

**Corridors**

- Railway corridor
- River site (SPA/Ramsar, SSSI & CWS)
- Existing Playing Field
- Corridor - Aspirational Links
- Buffer zone of site or corridor (400 or 100m)
- Ipswich Borough Boundary

\* Probable sites have not currently been assessed but could have wildlife value

Ranks refer to the Ipswich Wildlife Audit 2012-13 (All buffers 100m unless otherwise stated)



**IPSWICH**  
BOROUGH COUNCIL