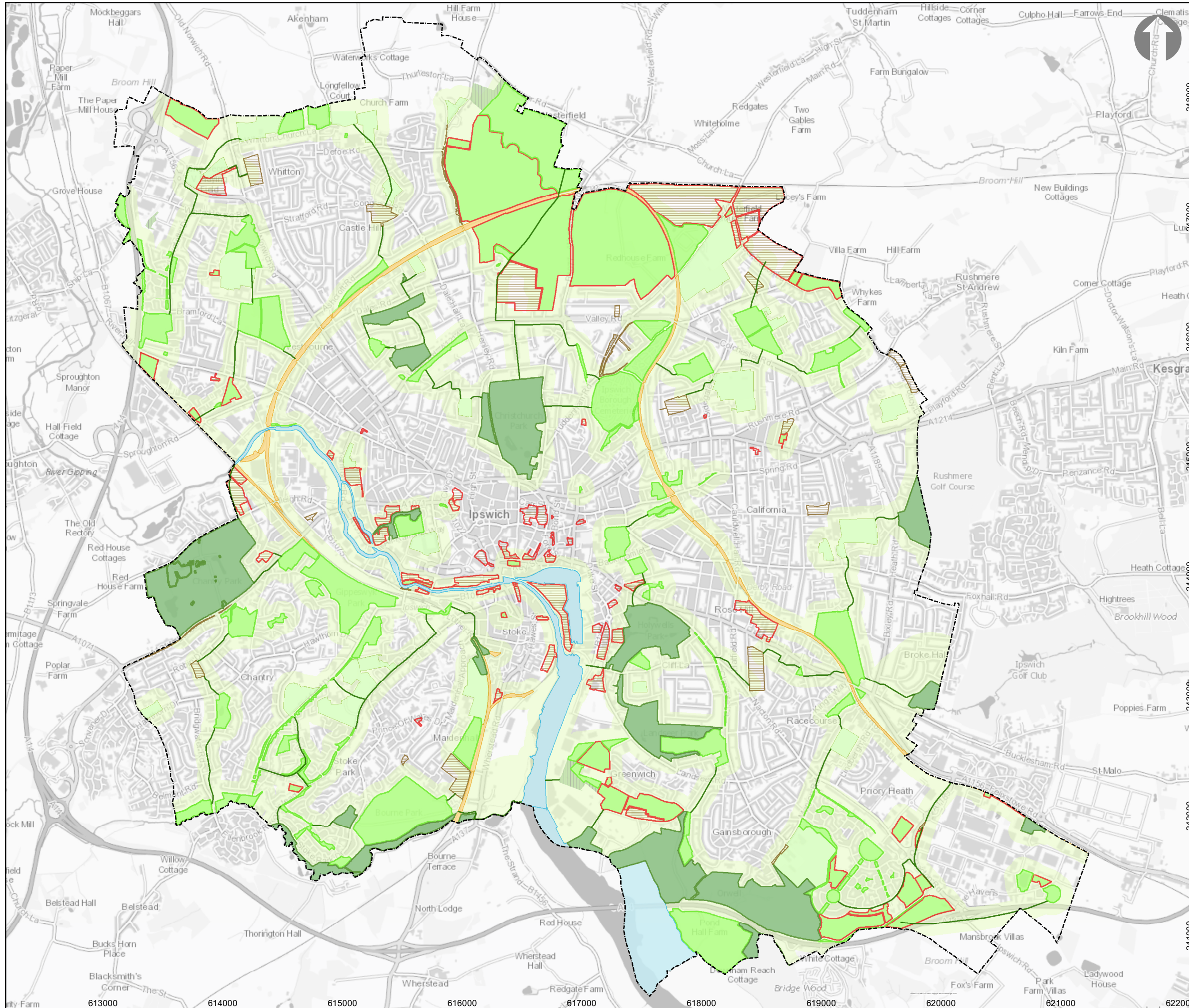


Plan 5: Ipswich Ecological Network

March 2022



Core Areas

- Rank 1 - 2. High Conservation Value (SPA/Ramsar & SSSI 400m buffer; CWS 100m)
- Rank 3 - 4. Medium Conservation Value (100m buffer)
- Potential Development site with wildlife interest Rank 1 - 4 (100m buffer)
- Rank 5 - 6. Low Conservation Value
- Potential Development site with wildlife interest Rank 5 or below
- Probable site - no current rank available*

Corridors

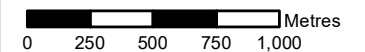
- Railway corridor
- River site (SPA/Ramsar, SSSI & CWS)
- Existing Playing Field
- Corridor - Aspirational Links
- Buffer zone of site or corridor (400 or 100m)
- Ipswich Borough Boundary

* Probable sites have not currently been assessed but could have wildlife value.

Development sites that were complete before April 2021 are not included.

Ranks refer to the Ipswich Wildlife Audit 2012-13 and 2019.

(All buffers 100m unless otherwise stated).



IPSWICH BOROUGH COUNCIL