

Local Development Scheme for Ipswich

8th Edition – September 2014
(7th Revision)
Revised Version



IPSWICH
BOROUGH COUNCIL

Development and Public Protection
Ipswich Borough Council
Grafton House, Russell Road
Ipswich IP1 2DE
(01473) 432019

email:
planningandregeneration@ipswich.gov.uk
website: www.ipswich.gov.uk

Please note:

This version of the Local Development Scheme for Ipswich replaces the version published in July 2013.

<u>Contents</u>		
Section	Title	Page
1	Introduction	3
2	Purpose and Content of the Local Development Scheme	4
3	A Summary of the Local Development Scheme for Ipswich	7
4	Local Development Documents	9
5	Other Documents that will be published	15
6	Strategic Environmental Assessment / Sustainability Appraisal	18
7	Transition to a new Local Plan	19
8	Risk Assessment	20
9	Monitoring and Review	23
Appendix 1	Profiles of the local development documents proposed for preparation or review	24
	<ul style="list-style-type: none"> □ Review of the Core Strategy and Policies* 24 □ Site Allocations and Policies (incorporating IP-One AAP)* 25 <ul style="list-style-type: none"> □ Ipswich Garden Suburb SPD 27 □ Community Infrastructure Levy Charging Schedule 28 □ Suffolk Advisory Parking Guidance 29 □ Urban Character SPD 30 □ Public Open Space SPD 31 □ Space and Design Guidelines SPD 32 □ Ipswich Cycling Strategy SPD 33 □ Low-Emissions Strategy SPD 34 	
	[* indicates those documents that will be development plan documents – see paragraph 2.3]	
Appendix 2	Proposals to incorporate saved policies within the adopted Ipswich Local Plan 1997 into proposed development plan documents	35
Appendix 3	List of relevant supplementary planning guidance documents	38
Appendix 4	Summary of key changes from the July 2013 Local Development Scheme	40
Appendix 5	Glossary of words and terms used in the LDS	41

1 Introduction

- 1.1 The Planning and Compulsory Purchase Act 2004 ('the Act') requires the Council to prepare and maintain a 'local development scheme'. This document is the revised local development scheme for Ipswich (also referred to as the 'LDS') and is the eighth edition since the original was published in January 2005. It replaces the seventh edition of the LDS for Ipswich published in July 2013.
- 1.2 The LDS for Ipswich sets out the development plan documents that Ipswich Borough Council is preparing, or intends to prepare, as part of the local planning policy framework, known as the Ipswich Local Plan. The LDS also explains the subject matter and geographical coverage of the documents, and the timetables for their preparation and on-going review.
- 1.3 In addition to development plan documents that together form the Ipswich Local Plan, the Council proposes to prepare or review additional planning documents. These are also outlined in the LDS for information, although it is not a legal requirement to include them.
- 1.4 It has become necessary to review the July 2013 LDS timetable again to take account of:
 - The introduction of new supplementary planning documents; and
 - Changes to the timetable as detailed in the Ipswich annual authority monitoring report published in June 2014.
- 1.5 This revised LDS sets a timetable that the Council expects to meet, however there are often unforeseen delays in plan preparation which may cause this timetable to change. Should there be significant changes prior to a formal revision of the LDS, it may be necessary for the Council to produce a revised chart during the course of the plan making period. The LDS focuses on having completed a Local Plan for Ipswich by the end of 2015, which includes formal adoption of the Ipswich Garden Suburb supplementary planning document.
- 1.6 This LDS for Ipswich is publicly available and can be purchased from the Council or obtained via the Council website: www.ipswich.gov.uk.
- 1.7 It has been prepared having regard to the Act and its associated Regulations, which set out precisely what needs to be in a local development scheme.
- 1.8 Whilst Ipswich Borough Council is responsible for much of the planning system for the Borough, Suffolk County Council remains responsible for preparing a minerals and waste development scheme. Further advice on that scheme can be obtained from the County Council (contact number 0345 606 6067).
- 1.9 A glossary explaining terms used within the LDS is contained at Appendix 5.
- 1.10 If you would like to discuss any aspects of this document, please contact the planning policy team at the address on the front cover of this document.

2 The Purpose and Content of the Local Development Scheme

2.1 The local development scheme has three main purposes. These are:

- ❑ To inform the public about documents that will make up the planning policy framework for Ipswich, and the timescales for the preparation of these documents;
- ❑ To establish and reflect council priorities and to enable work-programmes to be set for the preparation of documents; and
- ❑ To set a timetable for the review of the documents once they have been prepared.

2.2 Sections 3 and 4 and Appendix 1 set out the documents the Council will prepare and the timetables for doing so.

2.3 There are six different types of planning document that could potentially be prepared. Their content varies between policies for the use of land, policies for involving the public in planning, guidance, and information and this is explained in the following paragraphs.

- Development plan documents (DPDs);
- Neighbourhood plans;
- Supplementary planning documents (SPDs);
- A community infrastructure levy (CIL) charging schedule.
- A statement of community involvement (SCI); and
- An authority monitoring report (AMR).

2.4 The first type of planning document is called a development plan document (DPD). Together, DPDs form the Local Plan for a local authority area. Ipswich already has one adopted DPD in the form of the Core Strategy and Policies DPD (adopted December 2011). This sets out the overarching strategy for the future development of the Borough to 2027, and includes detailed policies to manage new development. The Ipswich DPDs currently under preparation/review or planned are highlighted within Section 4 and Appendix 1 of this LDS. All DPDs are subject to independent examination of their soundness by a Planning Inspector.

2.5 The statutory development plan for Ipswich currently consists of the adopted Core Strategy and Policies DPD. Until all Ipswich development plan documents are adopted, the statutory development plan also consists of certain saved policies from the 1997 Ipswich Local Plan.

2.6 Section 38(6) of the Planning and Compulsory Purchase Act states that:

“... for the purpose of any determination to be made under the planning Acts the determination must be made in accordance with the (development) plan unless material considerations indicate otherwise.”

- 2.7 The second type of planning document is a neighbourhood plan. This is a new type of planning document introduced by the Government through the Localism Act 2011¹ and supporting regulations. The provisions of the Localism Act for neighbourhood planning came into force on 6th April 2012. They allow a community to prepare a plan for its neighbourhood, provided the plan is in general conformity with strategic policies in the local plan for the area, and is subject to independent examination and a referendum. At present there are no proposals by communities for the preparation of neighbourhood plans in Ipswich.
- 2.8 The third type of planning document listed is called a supplementary planning document (SPD). These do not form part of the statutory development plan but they are considered as material considerations and provide additional detailed guidance to policies set out in development plan documents or in national policy. It is not a requirement that SPDs be listed in an LDS and this enables local planning authorities to prepare them as circumstances change. However, those that the Council currently plans to prepare are listed herein for information. SPDs are not subject to independent examination, but they are subject to public consultation by the Council before they are adopted.
- 2.9 The fourth type of planning document listed is the community infrastructure levy (CIL) charging schedule. The community infrastructure levy is a charge that local planning authorities may choose to levy on new development to fund infrastructure needed to support growth, usually taking the form of a charge per unit area of floorspace and may vary between types of development (i.e. housing, retail, industry). To date, Ipswich Borough Council has used section 106 agreements negotiated with developers to obtain such funding. However after 6th April 2015 the scope to use section 106 agreements will become more limited with local planning authorities not able to pool more than five section 106 contributions for an infrastructure project or type of general infrastructure, backdated from 6th April 2010. A CIL charging schedule is the document which sets out the charges to be levied and it is subject to independent examination. Public consultation was undertaken on a preliminary draft charging schedule between December 2013 and January 2014.
- 2.10 The fifth is the statement of community involvement (SCI). This deals specifically with how the Council will involve the community in planning. The SCI does not itself contain planning policies. A review of the Ipswich SCI was adopted in March 2014 and replaced the September 2007 SCI.
- 2.11 The final type of document listed is the authority monitoring report (AMR). All local planning authorities are required to prepare and publish an authority monitoring report at least every twelve months, to report progress on implementing the LDS and implementing policies in plans. The most recent AMR was published in June 2014 for the April 2012 to March 2013 monitoring period. Preparation of the AMR for the April 2013 to March 2014 monitoring period is currently underway.
- 2.12 The Act (as amended by the Planning Act 2008 and Localism Act 2011) states that a local development scheme must specify:
- the local development documents which are to be development plan documents;

¹ Localism Act 2011, Chapter 3

- ❑ the subject matter and geographical area to which each development plan document relates;
- ❑ which development plan documents, if any, are to be prepared jointly with one or more other local planning authorities;
- ❑ any matter or area in respect of which the authority has agreed (or proposes to agree) to the constitution of a joint committee [with other local planning authorities]; and
- ❑ the timetable for the preparation and revision of the development plan documents.

2.13 A duty to co-operate was introduced through the Localism Act 2011, which requires local planning authorities to work together constructively, actively and on an on-going basis on strategic, cross-boundary matters in the preparation of DPDs. The duty to co-operate is a means through which cross boundary issues will be dealt with. A statement outlining the duty to co-operate undertaken by Ipswich Borough Council with neighbouring local authorities, Suffolk County Council, and statutory agencies will be published alongside the proposed submission development plan documents (Regulation 19 of the Town and Country Planning (Local Planning) (England) Regulations 2012) in the autumn of 2014.

3 A Summary of the Local Development Scheme for Ipswich

3.1 The Council has considered which DPDs to prepare or review to form a complete Ipswich Local Plan, which complies with new legislation and reflects Council priorities. It has also considered which other planning documents to prepare or review, as follows:

- DPDs and SPDs, including for DPDs updates to the policies map (formerly known as the proposals map) where appropriate (see Section 4 and Appendix 1);
- A CIL charging schedule that sets out charges to be levied against new development (see Appendix 1);
- An authority monitoring report (see Section 9);
- General evidence base documents that will inform the production of planning documents, for example Wildlife Audit update 2012-13 (see Section 5);
- Supporting documentation (usually prepared at the ‘publication’ (Regulation 18²) or ‘submission’ (Regulation 19³) stages for development plan documents) will include for each relevant document:
 - a report setting out how the production of the development plan document complies with the requirements for Strategic Environmental Assessment and sustainability appraisal (see Section 6);
 - the details of pre-submission public participation as required by the Regulations;
 - an explanation of the steps undertaken to ensure that the document has been produced in accordance with the statement of community involvement; and
 - a list of documents that are relevant to the topic or areas that may be of relevance to the planning of that area. The Council may publish some of these but other bodies such as the Government will publish others.

3.2 The Council is not currently aware of community intentions within the Borough to prepare neighbourhood plans. These are plans led by the community rather than the local planning authority and therefore they would not necessarily in future be listed within the LDS.

3.3 County-wide supplementary guidance is being prepared by the County Council on parking standards, including car and cycle parking, which is expected to be adopted in the autumn of 2014.

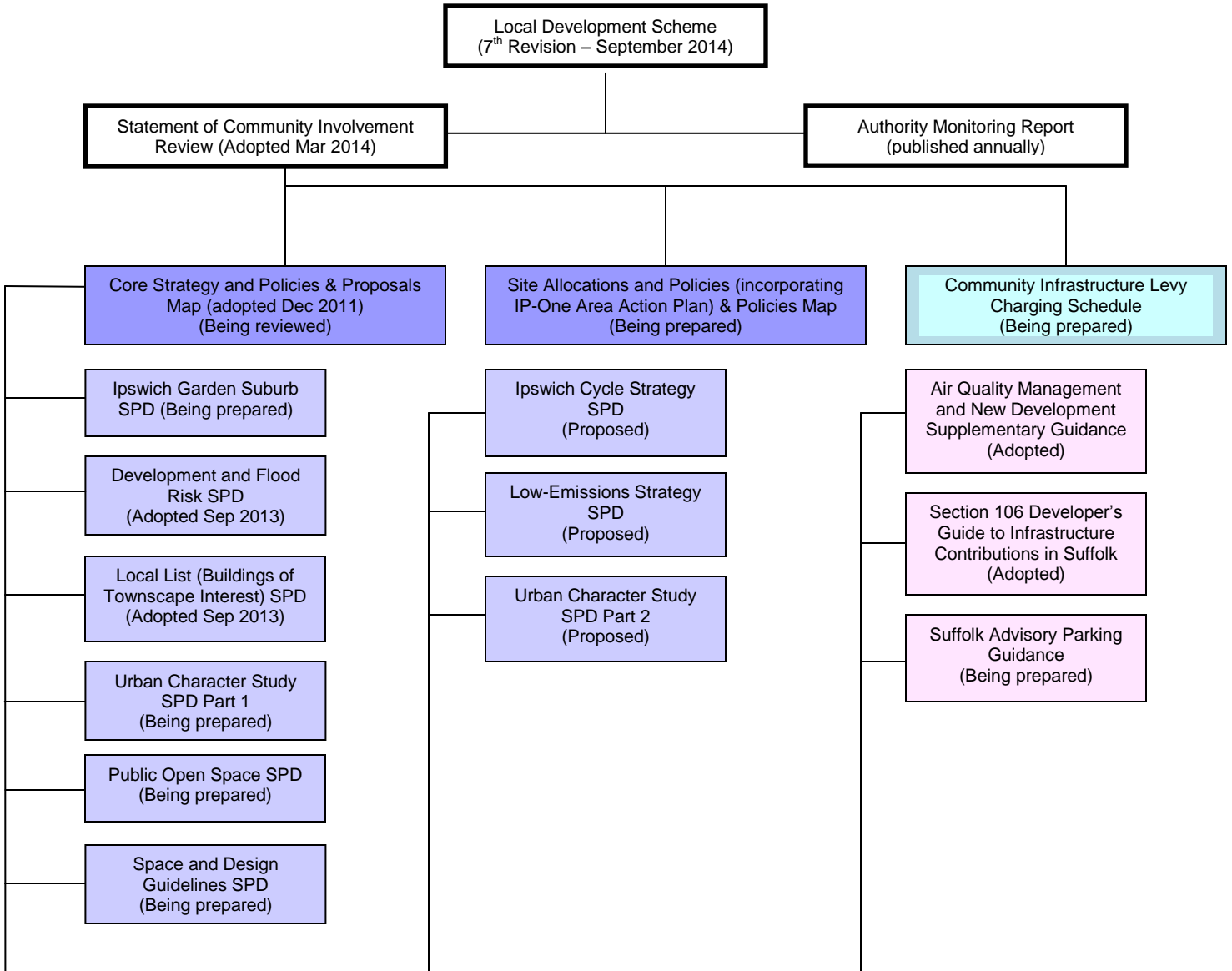
3.4 The diagram on the next page provides a summary of the planning documents that have been adopted or are proposed. All of these documents will be publicly available.

² Regulation 18 of the Town and Country Planning (Local Planning) (England) Regulations 2012

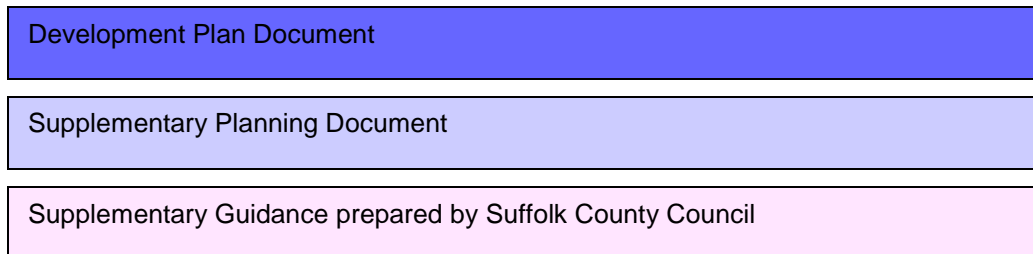
³ Regulation 19 of the Town and Country Planning (Local Planning) (England) Regulations 2012

Ipswich Local Development Scheme

7th Revision – September 2014



Key



4 Local Development Documents

- 4.1 Planning documents that the Council proposes to produce are listed below and explained in detail within Appendix 1. All the information that is required by the Act to be in a local development scheme (see paragraph 2.12) is included. The documents are:

	<i>Page</i>
Development Plan Documents (DPDs)	
<input type="checkbox"/> Review of the Core Strategy and Policies	24
<input type="checkbox"/> Site Allocations and Policies (incorporating the IP-One Area Action Plan) ⁺ , and Policies Map ⁴	25
Community Infrastructure Levy Documents	
<input type="checkbox"/> Community Infrastructure Levy Charging Schedule	28
Supplementary Planning Documents (SPDs)	
<input type="checkbox"/> Ipswich Garden Suburb [#]	27
<input type="checkbox"/> Urban Character [*]	30
<input type="checkbox"/> Public Open Space [*]	31
<input type="checkbox"/> Space and Design Guidelines [*]	32
<input type="checkbox"/> Ipswich Cycle Strategy [*]	33
<input type="checkbox"/> Low-Emissions Strategy [*]	34
Supplementary Guidance prepared by Suffolk County Council with District and Borough Council input	
<input type="checkbox"/> Suffolk Advisory Parking Guidance	29

⁺ IP-One area includes the Waterfront, Ipswich Village and other parts of central Ipswich – in previous local development schemes this has been shown as a separate document;

^{*} these SPDs will provide supplementary policies to those contained with the Core Strategy and Policies DPD;

[#] this SPD will provide further guidance and information on sites that will be allocated through the Core Strategy and Policies DPD.

- 4.2 The proposals map (now known as the policies map) will be revised at the same time as all development plan documents which involve changes to site allocations or geographical designations that need to be illustrated spatially, so as to always show policies and proposals on a geographical basis (Regulation 9(1)).
- 4.3 Further to the documents proposed above, the Council is also reviewing the Core Strategy and Policies DPD adopted in December 2011. This is also explained in Appendix 1.

⁴ The Proposals Map has been renamed as a policies map by Regulation 9 of the Town & Country Planning (Local Planning) (England) Regulations 2012. Please note that the adopted Core Strategy Proposals Map is still referred to as such, because it was published before the Regulations took effect.

Key Changes to the Local Development Scheme published in July 2013

- 4.4 The commencement of the review of the adopted Core Strategy and Policies DPD began in October 2012 and was announced in the Council's Local Plan newsletter 6 dated February 2013. In the adopted Core Strategy the Council is committed to commencing a review to revisit housing and employment growth targets following the abolition of the East of England Plan (May 2008), which occurred in January 2013. The review is particularly focused around policies CS7: The Amount of Housing Required, CS10: Ipswich Northern Fringe, CS13: Planning for Jobs Growth and CS17: Delivering Infrastructure. The Inspector in her report identified review mechanisms, including an early review of the Core Strategy, as critical to determining whether there is a need to accelerate the rate of release of development at the Northern Fringe of Ipswich (paragraph 45). This is to ensure the overall effectiveness of the policy approach to housing.
- 4.5 Subsequent to the Regulation 18 public consultation on the Core Strategy and Policies DPD focused review, it was identified that the scope of what constitutes a focused review had been challenged elsewhere in the country at public examination hearings. Therefore having reviewed the scope of the changes proposed, the Council has decided to proceed with a full review of the adopted Core Strategy and Policies development plan document. This however does not change the document significantly from that which underwent public consultation in early 2014 and provides the opportunity for the Council to reduce any potential duplication between the Core Strategy and Policies DPD and the emerging Site Allocations and Policies (incorporating IP-One Area Action Plan) DPD.
- 4.6 In addition, the Core Strategy and Policies DPD and the Site Allocations and Policies DPD now have equal status as part of the Ipswich Local Plan following changes to legislation through the Localism Act 2011 and the subsequent planning Regulations in 2012. However the Council wishes to keep the two documents separate but aligned given that there is already an adopted Core Strategy and Policies DPD in place.
- 4.7 The Council is revising the development management policies in light of the publication of the National Planning Policy Framework (NPPF) in March 2012 as previously reported in the 2013 LDS. The adopted Core Strategy and Policies development plan document is compliant with the NPPF however there is reference to documents which are no longer valid. The timetable for the review indicates submission is now expected in March 2015 with adoption in the autumn of 2015.
- 4.8 The draft Site Allocations and Policies (Incorporating IP-One Area Action Plan) DPD progresses two documents which were subject to public consultation in early 2008. Public consultation on a draft document (Regulation 18) was undertaken between January and March 2014 and a further round of public consultation (Regulation 19) is planned for the autumn of 2014.
- 4.9 The Planning Act 2008 removed the requirement for SPDs to be included in the local development scheme and for them to be subject to sustainability appraisal. However they are included here for information and completeness, and are subject to Strategic Environmental Assessment (SEA) screening to determine whether an assessment is required. If it is then a sustainability appraisal

incorporating SEA will be undertaken as was the case for the Ipswich Garden Suburb SPD.

- 4.10 The Ipswich Garden Suburb (formerly Northern Fringe Area Development Brief) SPD has been subject to a further round of public consultation at a draft stage between January and March 2014. Interim adoption of the SPD is planned for September 2014 to be used as a material consideration in determining any planning application that may be received. Formal adoption of the SPD will be subsequent to adoption of the Core Strategy and Policies DPD review, which will determine the extent of development in this area and the timing.
- 4.11 An Urban Character Study SPD is being prepared in two parts. This document will support the implementation of Core Strategy policies and inform future plan preparation and development management decision making. Detailed guidance already exists for the town's conservation areas, but there is little additional guidance for the larger part of the urban area to guide developers or planners. National and local planning policies require the protection and enhancement of the special character and distinctiveness of Ipswich. Part 1 of the study identifies, describes and analyses four urban character areas: California, Gipping & Orwell Valley, Norwich Road, and Parks. This will be subject to public consultation in August and September 2014 with adoption planned for later in 2014. Part 2 of the study will focus on four more character areas: North East, North West, South East, and South West, and preparation of this will begin in 2015.
- 4.12 A Public Open SPD is being prepared, which will replace two supplementary planning guidance documents on Public Open Space (August 1998) and The Provision and Maintenance of Children's Play Space (April 1999). The document will focus on the provision and maintenance of public open space, including children's play space and the requirement to enhance biodiversity and tree canopy cover through the implementation of open space policy contained within the Core Strategy. Public consultation is planned for November and December 2014.
- 4.13 A Space and Design Guidelines SPD is being prepared, which will replace the remaining elements of the non-statutory planning guidance: Development Control Policies and Design Guidelines (1992), in particular focusing on the space standards in between development. This SPD will also replace the supplementary planning guidance document: Good practice guide to extending your home (July 1999).
- 4.14 Two new SPDs have been added to the LDS:
- Ipswich Cycling Strategy SPD – This SPD would provide an opportunity to complement policies in the Core Strategy in respect of cycling infrastructure that can be achieved through new development. Suffolk County Council has recently published a Suffolk Cycling Strategy, which this document would need to complement, and it would also relate to the draft Suffolk advisory parking standards in respect of cycle parking, which is planned for adoption later this year. The intention of this document is to replace the Cycle Strategy for Ipswich (December 1997).
 - Low-Emissions Strategy SPD – This SPD is supported by the Council's environmental health service and would seek to provide a package of measures aimed at mitigating the transport impacts of development. The

primary aim of low-emissions strategies are to accelerate the uptake of cleaner vehicle fuels and technologies in and around development sites and to promote modal shift away from the car. An example could be electric recharging points in car parks and on-street.

- 4.15 The Suffolk Advisory Parking Guidance supplementary guidance is being prepared by Suffolk County Council with support from Ipswich Borough Council and districts in the county. The County Council undertook consultation on this document between June and August 2014 and it is planned for adoption by the County Council and then by Ipswich Borough Council in the autumn of 2014.
- 4.16 The Council is preparing a community infrastructure levy (CIL) approach to funding infrastructure. CIL is a charge levied on new developments based on their floor area (usually a charge per square metre). It is a set charge and is not negotiable. The money raised is used to pay for infrastructure provision needed to support growth. It will to some extent replace the section 106 planning agreement approach (section 106 of the Town and Country Planning Act 1990 (the section 106 system)) currently used to obtain and pool contributions from developers. Currently after 6th April 2015 local planning authorities will not be able to pool more than five section 106 contributions (CIL Regulation 123). Thus tariff or standard charge approaches based on the section 106 system will become unlawful after April 2015 and authorities that do not have CIL in place by then could lose funding for infrastructure as a result. It is not considered this will be a significant impact for Ipswich as the Council will still be able to pool up to five section 106 contributions.
- 4.17 The process for preparing a CIL charging schedule is similar to that for development plan documents. It is broadly as follows (for more detail refer to the Community Infrastructure Regulations 2010, as amended):
- Informal public consultation on the proposed levy rates in a draft preliminary version of the charging schedule (Regulation 15) – this was undertaken between December 2013 and January 2014;
 - Formal public consultation on a draft schedule for a period of at least four weeks during which representations can be made (Regulations 16 and 17);
 - Submission to, and examination in public of the draft charging schedule by an independent person appointed by the charging authority (Regulations 19 and 20);
 - Publication of the examiner's recommendations (Regulation 23);
 - The Council adopts the charging schedule (Regulation 25).
- 4.18 Chart 1 below presents the work programme and plots all the documents against a time-line. This chart illustrates the work programme for the production of planning policy from now until the end of 2017. The way in which Chart 1 shows the post-submission examination of DPDs is **indicative only** and will ultimately be a matter for the Inspector to determine. The length of examinations and reporting will depend on the number of representations received and the resources available at the Planning Inspectorate at the time. Therefore, the

examination and reporting times shown may need to be revised at a later date. The appointed Inspector will decide how the examinations will run once the documents and final representations have been submitted.

- 4.19 It is recognised that the planning system has resource implications for the Council. The Council's planning policy team will lead the production of local development documents, but additional resources will be made available corporately to support the work. There is also an acknowledgement that outside expertise will be required on some issues and that this will require funding via grants or corporate budgets.
- 4.20 The Council is committed to ensuring it keeps to the timetable it has set itself for the completion of individual local development documents and the Local Plan as a whole where possible. The timetable has been prepared having regard to the current and future anticipated resources available to the Council. A detailed risk assessment is provided in Section 8.
- 4.21 The Localism Act 2011 introduced a duty for local planning authorities to cooperate with each other over cross-boundary matters, and the adopted Core Strategy commits to joint working across the Ipswich Policy Area through Policy CS6. However, whilst in due course a number of authorities may have the same policies within respective development plan documents, the Council is not currently formally producing joint development plan documents with neighbouring authorities.
- 4.22 The work programme for post 2016 is to be determined with the exception of the Urban Character Study SPD Part 2 and the annual authority monitoring report. However it is anticipated there will be further joint strategic planning work with neighbouring local authorities as each local authority reviews their strategic development plan documents.

Ipswich Local Development Scheme Timetable September 2014																																																
	2014												2015												2016												2017											
	J	F	M	A	M	J	J	A	S	O	N	D	J	F	M	A	M	J	J	A	S	O	N	D	J	F	M	A	M	J	J	A	S	O	N	D	J	F	M	A	M	J	J	A	S	O	N	D
Review of Core Strategy & Policies DPD																																																
Site Allocations & Policies (incorporating IP-One Area Action Plan) DPD																																																
Ipswich Garden Suburb SPD																																																
CIL Charging Schedule																																																
Urban Character SPD - Part 1																																																
Urban Character SPD - Part 2																																																
Public Open Space SPD																																																
Space and Design Guidelines SPD																																																
Ipswich Cycling Strategy SPD																																																
Low-Emissions Strategy SPD																																																
Authority Monitoring Report																																																

Key to Stages of Preparation of Local Development Documents (note latest stage shown in colour for each month)

	Pre-submission Consultation for DPDs (Reg 18) & evidence gathering for SPDs
	Consideration of Consultation Comments
	Preparation of the planning document or AMR
	IBC Executive agree a draft document / make recommendation to Council
	Ipswich Borough Council to agree the Local Development Document
	Publication of DPD and formal public consultation period (Regs 19 & 20 for DPDs, Regs 12 & 13 for SPDs)
	Consideration of Consultation Comments
	Submission of the Local Development Document to Secretary of State (Regulation 22)
	Preparation of examination evidence (P=Pre-hearing meeting)
	Independent Examination
	Receive Inspector's Report
	Modify and Adopt the Local Development Document (Reg 26 for DPDs, Reg 14 for SPDs)
	Publish Authority Monitoring Report

5 Other Documents that will be published

- 5.1 The development plan documents will establish the Council's planning policies. However, in preparing these documents, a range of background work needs to be undertaken or taken account of. This work will be or has been published as the evidence base for policy preparation. Many of these documents will be/are produced either by, or for, the Council, but a number of them will be/are prepared by or for other organisations. In addition, a number of background documents will not be or have not been produced specifically for planning purposes but will be of relevance to development plan documents (e.g. the Suffolk Local Transport Plan).
- 5.2 Each background paper will be publicly available and will be available at the same time as, or before, any development plan document that relies on its contents. For example, the 'Core Document Library' for the Core Strategy and Policies DPD has been available since the plan was submitted and it includes at least 200 documents. Where appropriate the Core Strategy Core Document Library reference has been included in the table below for ease of reference. The Core Document Library can be viewed at www.ipswich.gov.uk/coredocumentlibrary, and at the Council's offices at Grafton House, Russell Road in Ipswich. It can also be viewed at the County Library in Northgate Street, Ipswich, during periods of public consultation and independent examination. The Core Document Library will be updated during 2014 and 2015.
- 5.3 Whilst the need for some background documents can be identified now, it should be noted that the Council might publish others in the course of preparing development plan documents.
- 5.4 Some key local and sub-regional elements of the evidence base are as follows:

Core Document Library (2011) reference	Study	Date published	Review date
ACD04	Suffolk Haven Gateway Employment Land Review and Strategic Sites Study (GVA Grimley)	2009	Authorities are working together to develop the methodology to assess employment land availability in accordance with the National Planning Policy Framework, which was published in March 2012. The document will be updated in late 2014 / early 2015.
PCD93	Ipswich Strategic Flood Risk Assessment Level 2 report (IBC)	Published May 2011	N/A
ICD23	Ipswich Housing Needs Study (Fordham Research)	2005	Updated 2012 through joint Strategic Housing Market Assessment. A Suffolk Housing Survey is currently being undertaken.

Core Document Library (2011) reference	Study	Date published	Review date
SCD22 SCD20	Strategic Housing Market Assessment (SHMA) including Affordable Housing Viability Study (Fordhams Research)	SHMA 2008, Viability Study 2009	Aspects are updated and published annually. SHMA was updated in August 2012. A whole plan viability exercise is being undertaken in the summer of 2014.
ACD14	Strategic Housing Land Availability Assessment (IBC)	March 2010	Update published in November 2013.
ACD07	Haven Gateway Water Cycle Study Stage 2	2010	-
	Ipswich Borough Council Strategies:		
	Economic Development Strategy	2005	Draft published in 2012.
	Housing Strategy 2010/11 to 2015/16	2011	-
	Cultural Strategy 2011-2014	2011	-
	Environment Strategy	2010	-
	Open Space and Biodiversity Policy / Strategy	2013	2023
	Tree Management Policy	2010	2015
ICD13	Sustainable Community Strategy for Ipswich 'Everybody Matters'	2008	-
PCD69	Ipswich Retail and Commercial Leisure Study (Strategic Perspectives)	October 2010	-
	Suffolk Local Transport Plan 3 2011-2031	2013	
-	Ipswich Town Centre Masterplan	2012	-
ICD30	Wildlife Audit	2000	Review took place over 2012-13 surveying seasons.

Core Document Library (2011) reference	Study	Date published	Review date
-	Ipswich housing market area population and household modelling projections	-	Published in September 2013.
PCD11, PCD38, PCD39	East of England Forecasting Model	2009/2010	Projections updated annually. A run is expected in September 2014.
-	Viability report of the Ipswich property market to inform the Community Infrastructure Levy	-	Published in November 2013.

5.5 The Council will consider whether to update or replace those documents it produces or commissions. It is not the Council's intention to repeat any work on these issues unless it will be of benefit to the Local Plan.

6 Strategic Environmental Assessment / Sustainability Appraisal (update)

- 6.1 The Council is required to assess and appraise its development plan documents to comply with Strategic Environmental Assessment / Sustainability Appraisal (SEA / SA) requirements. The SEA requirement stems from the European Directive 2001/42/EC on the assessment of the effects of certain plans and programmes on the environment, which has been transposed into English law by the Environmental Assessment of Plans and Programmes Regulations 2004. The SA requirement stems from the Planning and Compulsory Purchase Act 2004, Part 2 Section 19(5)(a). Previously supplementary planning documents (SPD) have also been subject to SA, but the Planning Act 2008 removed this requirement. However, SPDs undergo a screening exercise to determine if a Strategic Environmental Assessment is required and if so this is undertaken as part of a Sustainability Appraisal.
- 6.2 The key difference between the two processes is that Strategic Environmental Assessment focuses on environmental effects only, whereas Sustainability Appraisal gives equal consideration social, environmental and economic effects.
- 6.3 The Council published a Scoping Report (October 2013) for the two development plan documents (DPDs) it is currently preparing (the draft Core Strategy and Policies DPD focused review and the draft Site Allocations and Policies (incorporating IP-One Area Action Plan) DPD) for consultation in October and November 2013. This document was produced by consultants appointed by the Council and reviewed relevant plans, programmes and environmental objectives, setting the framework and approach for the SA process
- 6.4 An interim SA report (December 2013) for both DPDs was published for consultation between January and March 2014. The interim SA report supporting the draft Core Strategy and Policies DPD focused review assessed the effects of the changes to the Core Strategy from that contained in the adopted Core Strategy and Policies DPD (December 2011), an appraisal of cumulative and synergistic effects, and an appraisal of alternative options. The interim SA report supporting the draft Site Allocations and Policies (incorporating IP-One Area Action Plan) DPD appraised cumulative and synergistic effects as well as alternative options, together with an appraisal of the vision and objectives, area based policies, site allocations, IP-One policies and opportunity areas.
- 6.5 A SA (November 2013) was also produced for the draft Ipswich Garden Suburb SPD, which was consulted on alongside the SPD between January and March 2014. This document set out a summary of the key existing characteristics and issues in Ipswich, the SA framework objectives, alternative options considered in preparing the DPDs, and appraisals of the core objectives, framework plan, spatial strategies, design principles, transport strategy, infrastructure, and cumulative impacts.
- 6.6 Information on the monitoring of objectives and indicators for these sustainability appraisal documents will be contained within future authority monitoring reports (see Section 9).

7 Transition to a new Local Plan

- 7.1 The Council's local planning policy framework is currently in a state of transition between old and new systems. The old system is represented by the 'saved' policies of the 1997 adopted Ipswich Local Plan⁵. The new system is represented by the adopted Core Strategy and Policies development plan document (DPD), which has partially replaced the old Local Plan. The proposed revisions to Core Strategy (October 2013) Appendix 2, read together with the revisions to Core Strategy proposal map key, indicates which saved 1997 Local Plan policies still have force. Appendix 2 to this local development scheme also indicates how remaining saved 1997 Local Plan policies will be replaced in due course by new development plan documents.
- 7.2 The Core Strategy formed part of the Ipswich Local Development Framework under the provisions of the Planning and Compulsory Purchase Act 2004. However, the National Planning Policy Framework (March 2012) re-named the local development framework as a local plan. This introduces some scope for confusion. The new style of local plan differs from the old style in that the local plan can consist of more than one development plan document. The Ipswich Local Plan currently consists of the adopted Core Strategy and saved 1997 Local Plan policies. In due course the Site Allocations and Policies (incorporating IP-One Area Action Plan) development plan document will replace the remaining saved policies of the 1997 Local Plan.
- 7.3 When all the development plan documents are adopted, they will provide the new planning policy framework at the local level – the new Ipswich Local Plan.
- 7.4 The approved supplementary planning guidance documents and development briefs, and the emerging draft Core Strategy and Policies DPD review and Site Allocations and Policies (incorporating IP-One Area Action Plan) DPD which were subject to consultation in early 2014, are material considerations in the determination of planning applications until they are withdrawn by the Council or replaced by subsequent local development documents. A list of supplementary planning guidance documents that remain of relevance is provided at Appendix 3.
- 7.5 A schedule will be produced with each development plan document outlining to what extent that DPD replaces part(s) of the old planning policy framework. The adopted Core Strategy and Policies development plan document sets out this information in its Appendix 2, and on the key to the Core Strategy proposals map. A summary of the extent to which documents produced under the old system remain of relevance and are being implemented is provided within the authority monitoring report.

⁵ The transitional arrangements of the Local Development Framework system allowed adopted development plan policies to be 'saved'. On 14th September 2007, the Secretary of State issued a direction extending the saved period of many of the adopted Local Plan policies. The direction, together with the schedule of saved policies, may be viewed on the Council's website at <http://www.ipswich.gov.uk/NR/rdonlyres/F707B57E-9954-4358-973E-F39762CB439F/0/Direction2007.pdf>

8 Risk Assessment

- 8.1 The Council is required in this local development scheme to set out firm timetables for the delivery of local development documents. Therefore, it is important to identify the risks that could affect the work programme set out in this revised local development scheme, and to consider how the risks may be minimised and mitigated.

Risk Assessment for Revised Local Development Scheme

Risk	Likelihood H/M/L	Impact H/M/L	Mitigation / contingencies
1. Loss of staff, or reduction in staffing levels	Med	High	<ul style="list-style-type: none"> • Look to alternative sources of help e.g. secondments from the development management team, student planners. • Exit interviews are conducted to find out why staff leave so that any “push” factors may be identified and addressed. • IBC has a staff appraisal system in place. • Use consultants particularly for specialist work, dependent on available funding. • Look at possibility to increase resources within the team. • Ultimately we will need to monitor the staffing situation and adjust timetables if there is no alternative.
2. Risk to IBC’s LDS timetables in undertaking joint working.	Med	Med	<ul style="list-style-type: none"> • Exchange information on timetables with neighbouring districts. • Undertake regular liaison with key officers to get early alert to any changes.
3. Inadequate budget for preparation of plans or evidence base work.	Med	High	<ul style="list-style-type: none"> • Ensure future likely examinations and associated costs are considered within the Council’s budgeting process. • Ensure, as far as possible, that monies have been set aside in the Council’s budget. • Look for ways to add value to work e.g. through joint commissioning, as with the Gypsy, traveller and travelling showpeople accommodation assessment for example.

Risk	Likelihood H/M/L	Impact H/M/L	Mitigation / contingencies
4. New policy guidance being published part way through plan preparation.	Med	High	<ul style="list-style-type: none"> • High level policy change is monitored through the AMR. • Need to progress LDDs based on best information we have at the time. • Seek advice from the Planning Inspectorate as appropriate.
5. Change in political direction affecting policy	Low	High	<ul style="list-style-type: none"> • Aim for widest possible buy-in through involving Economic Development and Planning Working Group.
6. Capacity of Planning Inspectorate and other agencies to support the process.	Low	High	<ul style="list-style-type: none"> • Liaise with Planning Inspectorate in revising the LDS and keep PINS up to date if timetables change.
7. Consultation fatigue amongst public	Med	High	<ul style="list-style-type: none"> • Evidence to date suggests a good level of engagement, which is strongest when site allocations are involved. • Provide clear feedback from consultation exercises. • Keep the public informed about the process. • Link up with community strategy and other relevant consultations where possible.
8. Over-ambitious programming of document preparation	Med	High	<ul style="list-style-type: none"> • Manage non-local plan workload so as to ensure that LDS targets are met. • Employ robust project management approaches. • Continue to improve web-based comment system to make processing representations more efficient.

Risk	Likelihood H/M/L	Impact H/M/L	Mitigation / contingencies
9. Documents being found unsound/subject to legal challenge	Low	High	<ul style="list-style-type: none"> • Use the soundness self-assessment tool kit. • Take legal advice on plan process and content. • Ensure accurate records are kept of the process. • Ensure evidence base is robust.
10. Age of some of evidence base by the time we get to examination.	Med	Med	<ul style="list-style-type: none"> • Update information where possible.

9 Monitoring and Review

- 9.1 The Ipswich local development scheme will be monitored on an annual basis from April to the end of March. Each autumn a monitoring report will be prepared. The report will:
- ❑ Outline where the Council has reached in the preparation of each local development document. This would include giving reasons if any LDD is behind the timetable set out in the LDS;
 - ❑ Give the date of adoption of local development documents;
 - ❑ Provide information on the extent to which policies within the development plan documents and the saved Ipswich Local Plan policies are being achieved;
 - ❑ In particular, for policies which the Council thinks are not being implemented, the Council will give reasons as to why they are not being implemented and what it intends to do about it;
 - ❑ Provide information on the number of housing units that have been completed;
 - ❑ Conclude as to whether any new local development documents are required or whether any existing plans need reviewing in advance of their scheduled main review date (see paragraph 9.5 below); and
 - ❑ Indicate where the local development scheme needs updating.
- 9.2 The Council is required to prepare a local development authority monitoring report under the Localism Act 2011 and publish it direct to the public.
- 9.3 In Appendix 1, each local development document has been given a formal review period of between two and five years. This period has been determined having regard to the relative importance placed on ensuring each document is kept as up-to-date as possible, together with an analysis of the likelihood of circumstances changing that would affect the contents of the document.
- 9.4 This staggered review period will also ensure that the planning policy workload is spread out as consistently as possible across a three year period. This local development scheme effectively creates a work programme for the Council on planning policy from 2014 to 2017 (this is illustrated in the timetable in Section 3). This work programme will be informed and amended via future versions of the local development scheme as a result of monitoring that will be brought together within the authority monitoring report.
- 9.5 The adopted Core Strategy and Policies DPD committed the Council to starting the preparation of the Northern Fringe Area Development Brief immediately upon Core Strategy adoption (Policy CS10 Ipswich Northern Fringe). The Core Strategy proposals map identifies the area to be addressed. However, paragraph 8.111 of the Core Strategy also makes it clear that the total number of dwellings likely to be accommodated at the Northern Fringe will be determined through a review of the Core Strategy, to commence in 2012/13. A review commenced in early 2013 and alongside this preparation of an SPD for the Northern Fringe has been undertaken and is now referred to as the Ipswich Garden Suburb SPD.

Appendix 1 – Profiles of the Local Development Documents Proposed for Preparation or Review

What will the document be called?	Review of the Core Strategy and Policies
What is the subject of the document?	The whole plan review will focus on the housing growth figures for the Borough and will update the plan in accordance with the national policy and appropriate evidence
What geographical area does the document cover?	All of the Borough of Ipswich
Will it be a development plan document?	Yes
Will it be produced jointly with other authorities and will this involve a joint committee?	No, but during the process of review, particular attention will be paid to the views of Suffolk County Council, as education and highway authority and the local plans of neighbouring authorities in terms of proposals in the Ipswich policy area, in accordance with the Duty to Co-operate.
What timetable is proposed for this document (under the 2012 Regulations)?:	
<i>Notify stakeholders & invite representations (reg 18)</i>	Oct 2012-Mar 2014
<i>Publish draft proposed submission plan for inspection & invite representations (regs 19-20)</i>	Nov 2014-Jan 2015
<i>Submit plan & submission documents to Secretary of State (reg 22)</i>	Mar 2015
<i>Independent examination (reg 24)</i>	Jun 2015
<i>Receive & publish Inspector's recommendations (reg 25)</i>	Oct 2015
<i>Adopt the plan (reg 26)</i>	Nov 2015
Who will be responsible for producing the document?	The planning policy service of Ipswich Borough Council
When will the document be reviewed?	The document will be monitored on an annual basis and will then be the subject of a review within five years of adoption.

What will the document be called? **Site Allocations and Policies (incorporating IP-One Area Action Plan). Please note that this was formerly two separate plans.**

What is the subject of the document? **Together with the policies map and an IP-One area inset policies map, it will highlight land that is the subject of designations that means it will be protected, and identify allocations of land for specific types of development. For the IP-One area it will also provide a vision, design guidelines and an implementation framework. It will provide information and policies in connection with these allocations.**

What geographical area does the document cover? **All of the Borough of Ipswich. The area covered by the former IP-One Area Action Plan now incorporated into this DPD is shown on the map on the next page.**

Will it be a development plan document? **Yes**

Will it be produced jointly with other authorities and will this involve a joint committee? **No but during the process of document production, particular attention will be paid to the views of Suffolk County Council as education and highway authority, and the local plans of neighbouring authorities in terms of proposals in the Ipswich policy area, in accordance with the Duty to Co-operate.**

The timetable so far (conducted under the 2004 Regulations):

<i>Pre-submission consultation</i>	Commenced Jan 2005
<i>Consulting statutory bodies on the scope of the SA</i>	May 2006
<i>Preparation for Options Consultation</i>	Oct 2006 to Nov 2007
<i>Pre-submission public participation – The Preferred Options Consultation stage</i>	Jan to Mar 2008

Timetable proposed for remaining stages (under the 2012 Regulations):

<i>Notify stakeholders & invite representations (reg 18)</i>	Some repeat of the work carried out under the 2004 regulations, Jul 2012-Mar 2014
<i>Publish draft plan for inspection & invite representations (regs 19-20)</i>	Nov 2014-Jan 2015
<i>Submit plan & submission documents to Secretary of State (reg 22)</i>	Mar 2015
<i>Independent examination (reg 24)</i>	Jun 2015
<i>Receive & publish Inspector's recommendations (reg 25)</i>	Oct 2015
<i>Adopt the plan (reg 26)</i>	Nov 2015

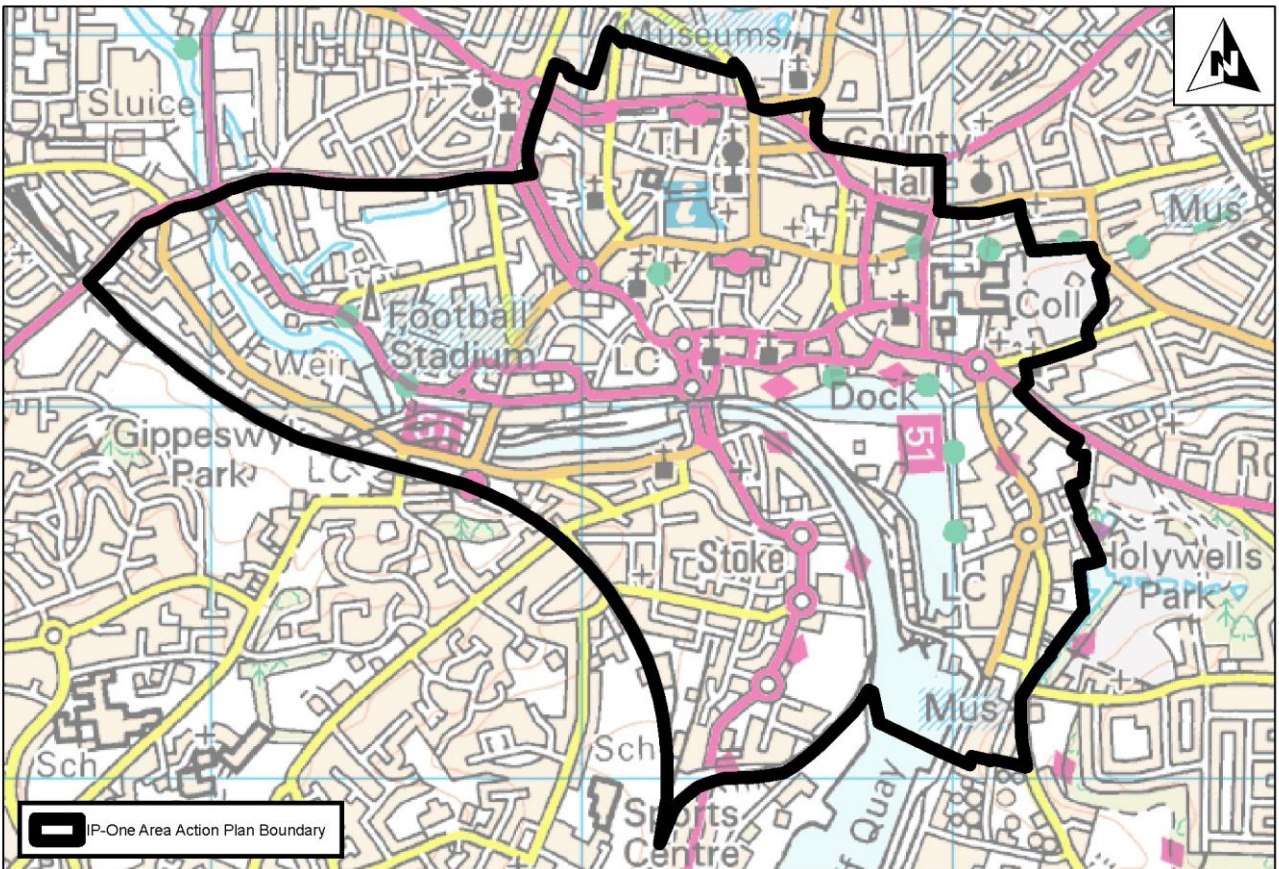
Who will be responsible for producing the document?

The planning policy service of Ipswich Borough Council

When will the document be reviewed?

The document will be monitored on an annual basis and will then be the subject of a review if the monitoring highlights such a need.

IP-One Area Action Plan area boundary



Reproduced from the Ordnance Survey mapping with the permission of the Controller of Her Majesty's Stationery Office. © Crown copyright. Unauthorised reproduction infringes Crown copyright and may lead to prosecution or civil proceedings. 100021568 2009.

What will the document be called?	Ipswich Garden Suburb SPD
What is the subject of the document?	The document will be supplementary to the Core Strategy and Policies DPD and will provide a more detailed design brief approach for the Northern Fringe area to that in the DPD and identify the infrastructure that developments will need to provide.
What geographical area does the document cover?	It covers the whole of the Northern Fringe of Ipswich as defined on the adopted Core Strategy proposals map.
Will it be a development plan document?	No, a supplementary planning document
Will it be produced jointly with other authorities and will this involve a joint committee?	No but during the process of document production, particular attention will be paid to the views of Suffolk County Council as education and highway authority and neighbouring authorities.
What timetable is proposed for this document (under the 2012 Regulations)?	<p><i>Evidence Gathering, consultation, preparation of SPD</i> Feb 2012-Jul 2013 (reg 12)</p> <p><i>Public consultation period (regs 12, 13)</i> Jan-Mar 2014</p> <p><i>Modify SPD and interim adoption (reg 14)</i> Aug-Sep 2014</p> <p><i>Modify and formally adopt SPD (reg 14)</i> Nov 2015</p>
Who will be responsible for producing the document?	The planning policy service of Ipswich Borough Council
When will the document be reviewed?	The document will be monitored on an annual basis and will then be the subject of a review if the monitoring highlights such a need.

What will the document be called	Community Infrastructure Levy (CIL) Charging Schedule												
What is the subject of the document?	The document will set out the charges to be levied on new development in Ipswich.												
What geographical area does the document cover?	All of the Borough of Ipswich												
Will it be a Development Plan document?	No												
Will it be produced jointly with other authorities and will this involve a joint committee?	No but during the process of document production, particular attention will be paid to the views of Suffolk County Council as education and highway authority, and neighbouring authorities in relation to any cross-boundary infrastructure provision.												
What timetable is proposed for this document (under the CIL Regulations 2010 as amended)?	<table border="0"> <tr> <td><i>Prepare preliminary draft, consult, consider representations (reg 15)</i></td> <td>Jun 2012-Feb 2014</td> </tr> <tr> <td><i>Publish draft schedule & consult (regs 16,17)</i></td> <td>Nov 2014-Jan 2015</td> </tr> <tr> <td><i>Submit for examination (reg 19)</i></td> <td>Mar 2015</td> </tr> <tr> <td><i>Examination (reg 20)</i></td> <td>Jun 2015</td> </tr> <tr> <td><i>Publication of Examiner's recommendations (reg 23)</i></td> <td>Sep 2015</td> </tr> <tr> <td><i>Modify and Adopt Charging Schedule (reg 25)</i></td> <td>Nov 2015</td> </tr> </table>	<i>Prepare preliminary draft, consult, consider representations (reg 15)</i>	Jun 2012-Feb 2014	<i>Publish draft schedule & consult (regs 16,17)</i>	Nov 2014-Jan 2015	<i>Submit for examination (reg 19)</i>	Mar 2015	<i>Examination (reg 20)</i>	Jun 2015	<i>Publication of Examiner's recommendations (reg 23)</i>	Sep 2015	<i>Modify and Adopt Charging Schedule (reg 25)</i>	Nov 2015
<i>Prepare preliminary draft, consult, consider representations (reg 15)</i>	Jun 2012-Feb 2014												
<i>Publish draft schedule & consult (regs 16,17)</i>	Nov 2014-Jan 2015												
<i>Submit for examination (reg 19)</i>	Mar 2015												
<i>Examination (reg 20)</i>	Jun 2015												
<i>Publication of Examiner's recommendations (reg 23)</i>	Sep 2015												
<i>Modify and Adopt Charging Schedule (reg 25)</i>	Nov 2015												
Who will be responsible for producing the document?	The planning policy service of Ipswich Borough Council												
When will the document be reviewed?	The document will be monitored on an annual basis and will then be the subject of a review if the monitoring highlights such a need.												

What will the document be called	Suffolk Advisory Parking Guidance
What is the subject of the document?	The document will provide additional information to support the implementation of policies relating to all types of vehicle parking. It will be supplementary to a policy contained within the Core Strategy and Policies DPD.
What geographical area does the document cover?	All of the Borough of Ipswich
Will it be a Development Plan document?	No. It will be Supplementary Guidance prepared by Suffolk County Council.
Will it be produced jointly with other authorities and will this involve a joint committee?	Yes it will be jointly prepared with all the Suffolk Districts and led by Suffolk County Council. It will not involve a joint committee.
What timetable is proposed for this document?	<i>Public consultation period</i> Jun-Aug 2014 <i>Modify and Adopt</i> Nov 2014
Who will be responsible for producing the document? When will the document be reviewed?	Suffolk County Council The document will be monitored on an annual basis and will then be the subject of a review if the monitoring highlights such a need.

What will the document be called	Urban Character SPD
What is the subject of the document?	The Study will identify, describe and analyse urban character areas across the whole of the Borough, identify important views within the town and support policy DM6: Tall Buildings in the Core Strategy. It will be supplementary to policy contained within the Core Strategy and Policies DPD.
What geographical area does the document cover?	All of the Borough of Ipswich excluding the conservation areas.
Will it be a Development Plan document?	No
Will it be produced jointly with other authorities and will this involve a joint committee?	No
What timetable is proposed for this document (under the 2012 Regulations)?	
<u>Part 1</u>	
<i>Evidence gathering, consultation, preparation of SPD (reg 12)</i>	Jan 2013-Jun 2014
<i>Public consultation period (regs 12, 13)</i>	Aug-Sep 2014
<i>Modify and Adopt SPD (reg 14)</i>	Jan 2015
<u>Part 2</u>	
<i>Evidence gathering, consultation, preparation of SPD (reg 12)</i>	Jun 2015-Dec 2015
<i>Public consultation period (regs 12, 13)</i>	Feb-Mar 2016
<i>Modify and Adopt SPD (reg 14)</i>	Jul 2016
Who will be responsible for producing the document?	The planning policy service of Ipswich Borough Council
When will the document be reviewed?	The document will be monitored on an annual basis and will then be the subject of a review if the monitoring highlights such a need.

What will the document be called	Public Open Space SPD
What is the subject of the document?	The document will focus on the provision and maintenance of public open space, including children’s play space and the enhancement of biodiversity and tree canopy cover through the implementation of open space policy contained within the Core Strategy. It will be supplementary to a policy contained within the Core Strategy and Policies DPD.
What geographical area does the document cover?	All of the Borough of Ipswich
Will it be a Development Plan document?	No
Will it be produced jointly with other authorities and will this involve a joint committee?	No
What timetable is proposed for this document (under the 2012 Regulations)?	<p><i>Evidence gathering, consultation, preparation of SPD</i> Sep 2013-Sep 2014 (reg 12)</p> <p><i>Public consultation period (regs 12, 13)</i> Nov-Dec 2014</p> <p><i>Modify and Adopt SPD (reg 14)</i> Mar 2015</p>
Who will be responsible for producing the document?	The planning policy service of Ipswich Borough Council
When will the document be reviewed?	The document will be monitored on an annual basis and will then be the subject of a review if the monitoring highlights such a need.

What will the document be called	Space and Design Guidelines SPD
What is the subject of the document?	This document will focus on the space standards in between development and provide good design practice guidelines for development. It will be supplementary to a policy contained within the Core Strategy and Policies DPD.
What geographical area does the document cover?	All of the Borough of Ipswich
Will it be a Development Plan document?	No
Will it be produced jointly with other authorities and will this involve a joint committee?	No
What timetable is proposed for this document (under the 2012 Regulations)?	
	<i>Evidence gathering, consultation, preparation of SPD</i> Sep 2013-Sep 2014 (reg 12)
	<i>Public consultation period (regs 12, 13)</i> Nov-Dec 2014
	<i>Modify and Adopt SPD (reg 14)</i> Mar 2015
Who will be responsible for producing the document?	The planning policy service of Ipswich Borough Council
When will the document be reviewed?	The document will be monitored on an annual basis and will then be the subject of a review if the monitoring highlights such a need.

What will the document be called	Ipswich Cycling Strategy SPD
What is the subject of the document?	The document will focus on the provision and maintenance of public open space, including children’s play space and the enhancement of biodiversity and tree canopy cover through the implementation of open space policy contained within the Core Strategy. It will be supplementary to a policy contained within the Core Strategy and Policies DPD.
What geographical area does the document cover?	All of the Borough of Ipswich
Will it be a Development Plan document?	No
Will it be produced jointly with other authorities and will this involve a joint committee?	No
What timetable is proposed for this document (under the 2012 Regulations)?	<i>Evidence gathering, consultation, preparation of SPD</i> Sep 2014-Jul 2015 (reg 12) <i>Public consultation period (regs 12, 13)</i> Sep-Oct 2015 <i>Modify and Adopt SPD (reg 14)</i> Dec 2015
Who will be responsible for producing the document?	The planning policy service of Ipswich Borough Council
When will the document be reviewed?	The document will be monitored on an annual basis and will then be the subject of a review if the monitoring highlights such a need.

What will the document be called	Low-Emissions Strategy SPD
What is the subject of the document?	<p>The document will seek to provide a package of measures aimed at mitigating the transport impacts of development. The primary aim of low emissions strategies are to accelerate the uptake of cleaner vehicle fuels and technologies in and around development sites and to promote modal shift away from the car.</p> <p>It will be supplementary to a policy contained within the Core Strategy and Policies DPD.</p>
What geographical area does the document cover?	All of the Borough of Ipswich
Will it be a Development Plan document?	No
Will it be produced jointly with other authorities and will this involve a joint committee?	No
What timetable is proposed for this document (under the 2012 Regulations)?	<p><i>Evidence gathering, consultation, preparation of SPD</i> Sep 2014-Jul 2015 (reg 12)</p> <p><i>Public consultation period (regs 12, 13)</i> Sep-Oct 2015</p> <p><i>Modify and Adopt SPD (reg 14)</i> Dec 2015</p>
Who will be responsible for producing the document?	The planning policy service of Ipswich Borough Council
When will the document be reviewed?	The document will be monitored on an annual basis and will then be the subject of a review if the monitoring highlights such a need.

Appendix 2 – Incorporating Saved Policies from the adopted Ipswich Local Plan 1997 into existing and proposed Development Plan Documents

The Core Strategy replaces a large number of saved Local Plan policies, with the remainder due to be replaced by the Site Allocations and Policies (incorporating IP-One Area Action Plan) development plan document. Saved policies from the 1997 Local Plan which remain in force following adoption of the Core Strategy are as follows:

Policy	Policy subject matter	Comments
<u>Chapter 5 The Wet Dock Area</u>		
WD3	Site allocations in the Wet Dock area	
WD4	Links between Wet Dock and town centre	Detailed proposals if appropriate would be considered through the Site Allocations DPD but see also Core Strategy Policy CS20
WD5	Site allocations in the Transition area	
WD7	Residential site allocation in Wet Dock area	
WD8	Public access to water frontages	See also Core Strategy Policy CS16
WD9	Wet Dock area open space allocation	
WD10	Wet Dock area provision of open space in developments	
WD11	Wet Dock area museums, arts and entertainment uses	
WD12	Wet Dock area tourism uses	
WD13	Wet Dock area community uses	See also Core Strategy Policy CS3
WD14	Wet Dock area University College Suffolk	Any further land allocations if appropriate would be considered through the Site Allocations DPD but see also Core Strategy Policy CS15
WD15	Wet Dock area employment	
WD16	Transition area	
WD17	Wet Dock office uses	
WD18	Shopping in the Wet Dock area	See also Core Strategy Policy DM23
WD19	Pedestrian access between the Wet Dock and the town centre	Detailed proposals if appropriate would be considered through the Site Allocations DPD but see also Core Strategy Policy CS20
WD20	Car parking in the Wet Dock area	
WD21	Road Proposal in the Wet Dock area	The need for an allocation to safeguard the route will be considered through the Site Allocations DPD but see also Core Strategy Policy CS20 paragraphs 8.229 to 8.231

Policy	Policy subject matter	Comments
<u>Chapter 6 Housing</u>		
H3	Housing allocation Nacton Road	Will be replaced if there is any land remaining through the Site Allocations DPD
H4	Residential site allocations	Will be replaced if there is any land remaining through the Site Allocations DPD
H5	Protecting residential allocations	
H6	Opportunity sites for residential use	Will be replaced if there is any land remaining through the Site Allocations DPD
<u>Chapter 7 Recreation and Leisure</u>		
RL8	Site allocations for public open space	The need for allocations for new open space will be considered through the Site Allocations DPD but see also Core Strategy Policies CS10 and CS16
RL11	Site allocations for children's play	The need for allocations for new children's play areas will be considered through the Site Allocations DPD
RL16	Site allocations for sports pitches	The need for allocations for new open space will be considered through the Site Allocations DPD but see also Core Strategy Policies CS10 and CS16
RL19	Site Allocation for Sports Park	
RL23	Protecting museums, arts and entertainment facilities	
RL24	Arts and entertainment uses in major developments	
<u>Chapter 8 Community Facilities</u>		
CF9	Site allocations for education facilities	
<u>Chapter 9 Employment</u>		
EMP2	Employment Areas	
EMP5	Sites allocated for employment use	
EMP7	Sites allocated for port related uses	
<u>Chapter 11 Transport</u>		
T7	Pedestrian Priority Areas	
T14	Site allocations for short stay parking	

In addition to the policies listed above, some allocations and designations shown on the 1997 adopted Local Plan proposals map remain in force until superseded by a policies map update. This will be made in parallel with the publication of the Site Allocations and Policies development plan document (incorporating the IP-One Area Action Plan). The adopted Core Strategy proposals map indicates which 1997 Local Plan designations remain in force.

Appendix 3 – List of Supplementary Planning Guidance documents relevant to Ipswich and those revoked

The following is a list of adopted Supplementary Planning Guidance documents that will remain material considerations in the determination of planning applications. In due course the Council will delete them but it is anticipated that this will only occur after the event highlighted in the ‘Long Term position in new Local Plan’ column occurs.

Supplementary Planning Guidance Title	Date	Long term position in new Local Plan
Development Control Policies and Design Guidelines	1992	Standards still considered necessary and regularly used. Will be incorporated into new Space and Design Guidelines SPD.
Accessible General Housing	1997	Not likely to be required. Many of the issues are now covered by the Building Regulations system.
Central Shopping Area Frontages	1997	May not be required in the long term as policies could be incorporated within the Site Allocations and Policies (incorporating IP-One Area Action Plan) DPD, and the annual monitoring of frontage information includes details of the frontages.
Out of Town Centre Shopping	1997	Not likely to be required in the long term. Policies have been incorporated within the Core Strategy and Policies DPD.
A Cycle Strategy for Ipswich	1998	Some aspects to be reviewed and updated through the revised Suffolk Advisory Parking Standards, the Ipswich Major Scheme ‘Travel Ipswich’, and the Ipswich Cycling Strategy SPD.
Public Open Space	1998	Incorporated within the Core Strategy and Policies DPD and will be supported by new Public Open Space SPD.
Smart Street / Foundation Street / Lower Orwell Street area	1998	Will be assessed through the Site Allocations and Policies (incorporating IP-One Area Action Plan) DPD.
A Good Practice Guide to Extending Your Home	1999	The document is still considered to be relevant and useful to applicants and therefore it will be retained until it is incorporated into new Space and Design Guidelines SPD.
Reducing the Environmental Impact of New Development	1999	Not likely to be required. Policies have been incorporated within the Core Strategy and Policies DPD and many of the issues are now covered by the Building Regulations system.
The Provision and Maintenance of Children’s Play Space	1999	Policy incorporated within the Core Strategy and Policies DPD and will be supported by new Public Open Space SPD.

The following is a list of supplementary planning guidance documents being revoked.

Supplementary Planning Guidance Title	Date	Reason for revocation
Section 106 Obligations	2000	Superseded by the Section 106 Developers Guide to Infrastructure Contributions in Suffolk adopted by Ipswich Borough Council in July 2012 and updated in January 2014.
Henslow Road Co-op Depot	1999	Development completed at the site.
Bolton Lane area	1999	Development completed at the site.
Land south of Bramford Road	1998	The site has largely been developed and the remaining sites will have individual site briefs if considered necessary.
Hayhill Road Allotments	1997	The site has planning permission and is being developed.

Appendix 4

Summary of Key Changes from the July 2013 LDS

There are three major changes between this revised version of the LDS and the previous version published in July 2013. These are:

1. Updating timetables for DPDs and SPDs.
2. Adding two SPDs on an Ipswich Cycling Strategy and a Low-Emissions Strategy.
3. Revoking five supplementary planning guidance documents which are no longer relevant in planning decisions.

In addition a number of other minor changes have been made to the text to ensure that:

- It is clear that this is a revision of the previous LDS; and
- Parts of the text are amended to ensure that it is up to date.

More detail on these changes and the reasoning behind them can be found in Section 4 of this Local Development Scheme and within the relevant report to Ipswich Borough Council's Executive Committee on 9th September 2014. A copy of that report can be obtained from the address on the front cover of this document, or the Council's website www.ipswich.gov.uk.

Appendix 5

Glossary of Words and Terms used in the LDS

<u>Word / Phrase</u>	<u>Abbreviations</u>	<u>Definitions</u>
106 Obligations		Requirements of developers as part of planning permissions. These are agreed in the planning application process, to provide contributions (usually financial) to develop facilities / amenities for the local community (eg. education, open space).
Adopted		Final agreed version of a document or strategy.
Affordable housing		Housing which is accessible to those who cannot afford to buy or rent appropriate accommodation for their needs in the local housing market.
Authority Monitoring Report	AMR	Document produced each year recording and presenting progress on all elements of the local development framework where measurement is required.
Area Action Plan	AAP	One of a number of types of planning documents that can form part of the local plan. The document would relate to part of, rather than all of the borough.
Authority		Organisation or body responsible for implementation of particular tasks.
Community Plan		'One-Ipswich' is the community plan for Ipswich and is a document produced to promote and improve the economic, social and environmental well-being of the community.
Conformity		A term for a proposal, plan or strategy which is in line with policies and principles set out in other relevant documents.
Core Strategy		The development plan document which provides the vision for the future development of Ipswich. It sets out the key policies that all planning applications will be assessed against.

Development Plan Document	DPD	A document which sets out the planning policy framework against which proposals for development will be assessed. The Core Strategy and combined Site Allocations document are both DPDs.
Development Plans Team		See Planning Policy.
Implementation Framework		A process which sets out to ensure proposals in plans, programmes and strategies are completed within an agreed timeframe.
Inspector's Report		Document produced by an independent inspector from the Planning Inspectorate. It assesses the soundness and robustness of development plan documents.
Integrated Transport		Term used to describe how various modes of transport work together.
Ipswich Borough Council	IBC	The Council responsible for a range of service provision in Ipswich including the local development framework and dealing with planning applications.
Local Development Documents	LDD	All development plan documents and supplementary plan documents are local development documents.
Local Development Framework	LDF	The name previously given to the collection of plans prepared by IBC which provided the policy framework for development in the Borough. Now it is known as a Local Plan.
Local Development Scheme	LDS	The document that sets out Ipswich Borough Council's proposals for new LDDs and the timetable for producing them.
Local Plans		The 'new' term for a local planning authority's local development framework. The local plan comprises all the DPDs for a local planning authority's area.
Material Consideration		A factor to be taken into account when making a planning decision.
Monitoring and Review		Regular measurement of progress towards targets, aims and objectives. It also involves scrutiny, evaluation and, where necessary, change of policies, plans and strategies.
Options Consultation		A stage in the production of a LDD which seeks to actively involve statutory authorities and the public in determining a range of options for future planning policy and development.

Planning and Compulsory Purchase Act 2004		The law that changed the planning system in the UK.
Planning Policy	PP	The service within Ipswich Borough Council which is responsible for developing the local plan in Ipswich.
Planning Policy Framework		Policy statements and guidance on planning issues set out in documents produced at central, regional and local government levels.
Pre Submission Consultation		Consultation with statutory consultees prior to DPDs and SPDs being written.
Pre Submission Public Participation		Consultation with the general public and all those with an interest in each particular document prior to the documents being written.
Regeneration		Renewal and rehabilitation of former derelict or under-used sites / areas.
Renaissance		Term to describe the revitalisation of an area.
Site Allocations		Designation of land in a LDD for a particular land use (e.g. Housing).
Statement of Community Involvement	SCI	Document which sets out the standards which an authority will achieve with regard to involving local communities in the preparation of <i>local development documents</i> and development management decisions.
Statement of Conformity		Statement which identifies and confirms that all policies, proposals and strategies are in line with relevant national policies.
Strategic Environmental Assessment	SEA	An environmental assessment which complies with the EU Directive 2001/42/EC. The environmental assessment involves the preparation of an environmental report, the carrying out of consultations, the taking into account of these in decision making, the provision of information when the plan or programme is adopted and showing that the results of the environmental assessment have been taken into account.
Strategic Housing Land Availability Assessment	SHLAA	A piece of evidence required to demonstrate that the land proposed for residential development in a DPD is suitable, available and likely to come forward during the plan period.

Strategic Housing Market Assessment	SHMA	A piece of evidence required to enable local planning authorities to ensure that local plan policies help to create balanced housing markets.
Suffolk County Council	SCC	The Council that is responsible for a range of services including education and transport.
Suffolk Local Transport Plan	LTP	A document relating to highway and transport projects and programmes.
Supplementary Guidance		Guidance to assist the delivery of development and may be prepared by another body such as a County Council, where this would provide economies in production and the avoidance of duplication, e.g. where the information in it would apply to areas greater than single districts.
Supplementary Planning Documents	SPD	Documents which local planning authorities may prepare which will provide additional supporting information in respect of policies in <i>development plan documents (DPDs)</i> . They do not form part of the Development Plan and are not subject to independent examination but they will be treated as a material consideration when determining planning applications.
Supplementary Planning Guidance	SPG	Non-statutory planning guidance which complements development plans and Central Government policy advice under the old planning system. SPG offers more detailed advice and has often been used to help implement the policies and proposals in the local plan.
Sustainability Appraisal	SA	A tool for appraising policies and documents to ensure they reflect sustainable development objectives. All policies and development plan documents must be subject to a sustainability appraisal.