

**RMC (UK)**



3/4 Tel. conference with Frances Tubb, who has taken over from Mr. Atkinson. Agreed to vary as non-subst. change.

Environment Department  
RMC House  
High Street  
Feltham  
Middlesex  
TW13 4HA

Ms Tubb also requested that all correspondence goes to her for the future. ab.

Telephone  
01932 568833  
Facsimile  
020 8751 0006  
Direct Dial  
01932 583427  
Email  
Tubbf@rmc-  
readymix.co.uk

18/4 Draft v. notice emailed.  
19/5 No response, email request responded.  
11/5 Resub draft, at their request. ab.  
19/5 Checked it was received - it was, they will respond probably next week. ab.

Facsimile

To	Mr. C. Bentley	Fax Number	01473 433062
Company	Ipswich Borough Council	No. of pages (inclusive)	4
From	Frances Tubb	Date	3/4/00
Subject	<b><u>RMC Readymix (East Anglia) Limited</u></b> <b><u>Portmans Walk, Ipswich</u></b> <b><u>Application for a relevant change under Section 11 of the EPA 1990</u></b>		

Dear Mr. Bentley,

Thank you for your correspondence of the 30<sup>th</sup> March 200 concerning the authorisation for the above site.

RMC Readymix (East Anglia) Limited wish to apply for a relevant change under Section 11 of the Environmental Protection Act 1990. Relevant change being defined as "a change in the manner of carrying on the process which is capable of altering the substances released from the process or of affecting the amount of or any other characteristic of any substance so released".

The Company have recently installed an extract ventilation unit within the truck mixer loading area at Portmans Walk to minimise the potential for dust emissions. I enclose the manufacturers details for your information.

Condition 14 of the current authorisation states that the spray bar system installed around the truck mixer loading area, and the skirt fitted to the loading bay entrance shall be used to ensure that dust emissions remain within the loading area.

The installation of the Heaton Green dust extraction unit with reverse jet cleaning cartridge filter is the "Best Available Technology" for this process and the potential for dust emissions will be further minimised by the use of an extract ventilation unit opposed to the spray bar system as listed in Condition 14.

If there are any problems receiving this facsimile please contact the sender on the number above.

This communication is intended only for the addressee. It may contain confidential or privileged information. If you receive this communication unintentionally, please inform us immediately. Thank you.

RMC have installed extract ventilation units within the truck mixer loading area at their more sensitive locations as we believe this is the best available technology for this purpose.

The Company believe that the installation is classed as a relevant change (non - substantial) rather than a substantial change. Substantial change is defined as "*a substantial change in the substances released from the process or in the amount or any other characteristic of any substance so released.*" Guidance given in GG1(91) suggests that the introduction of more efficient arrestment plant is classified as a non - substantial change.

I believe that the introduction of the dust extraction unit within the loading area is a non - substantial change and would request that the authorisation is varied to take into account this improvement to the concrete batching process at Portmans Walk.

I trust this is satisfactory to you. If you require any additional information, please do not hesitate to contact me direct on (01932) 583427.

Kind Regards,



Frances Tubb  
Environmental Advisor

cc. Chris Lipscombe - RMC Readymix (East Anglia) Limited

---

If there are any problems receiving this facsimile please contact the sender on the number above.

This communication is intended only for the addressee. It may contain confidential or privileged information. If you receive this communication unintentionally, please inform us immediately. Thank you.

26-JAN-00 WED 15:19 HEATONGREEN DUST

P.03

F. A. O. Clare ROWLANDS.

DC9485 &amp; 6

-2-

26/01/2000

SPECIFICATION

**Application:** Silo Venting Filters

**ONE:** CARTRIJET CJ18L/3x3  
Reverse Jet Cleaning Cartridge Filter

**Filter Media:** Non Woven, Spun Bonded Polyester in Pleated Form

**Filter Area:** 18m<sup>2</sup>

**No. of Cartridges:** 9

**Filter Area/Cartridge:** 2m<sup>2</sup>

**Sequential Controller:** 3 way fully automatic solid state PCB mounted in a mild steel dust proof box. There are LED indicators on each of the outputs and duration and interval times are variable. 3-110V Solenoid Valves will be fitted into and be an integral part of the controller. The required supply voltage is 110V, 220V or 240V single phase. This controller will be built to meet the requirements of the European Directive on EMC, which is a legal requirement from the 1st. Jan. 1996. Ref. BSEN 61000 Parts 2-2 and 2-4.

**Compressed Air Requirements:** 4.5m<sup>3</sup>/hr @ 6Bar, free air, being clean, dry and oil free.

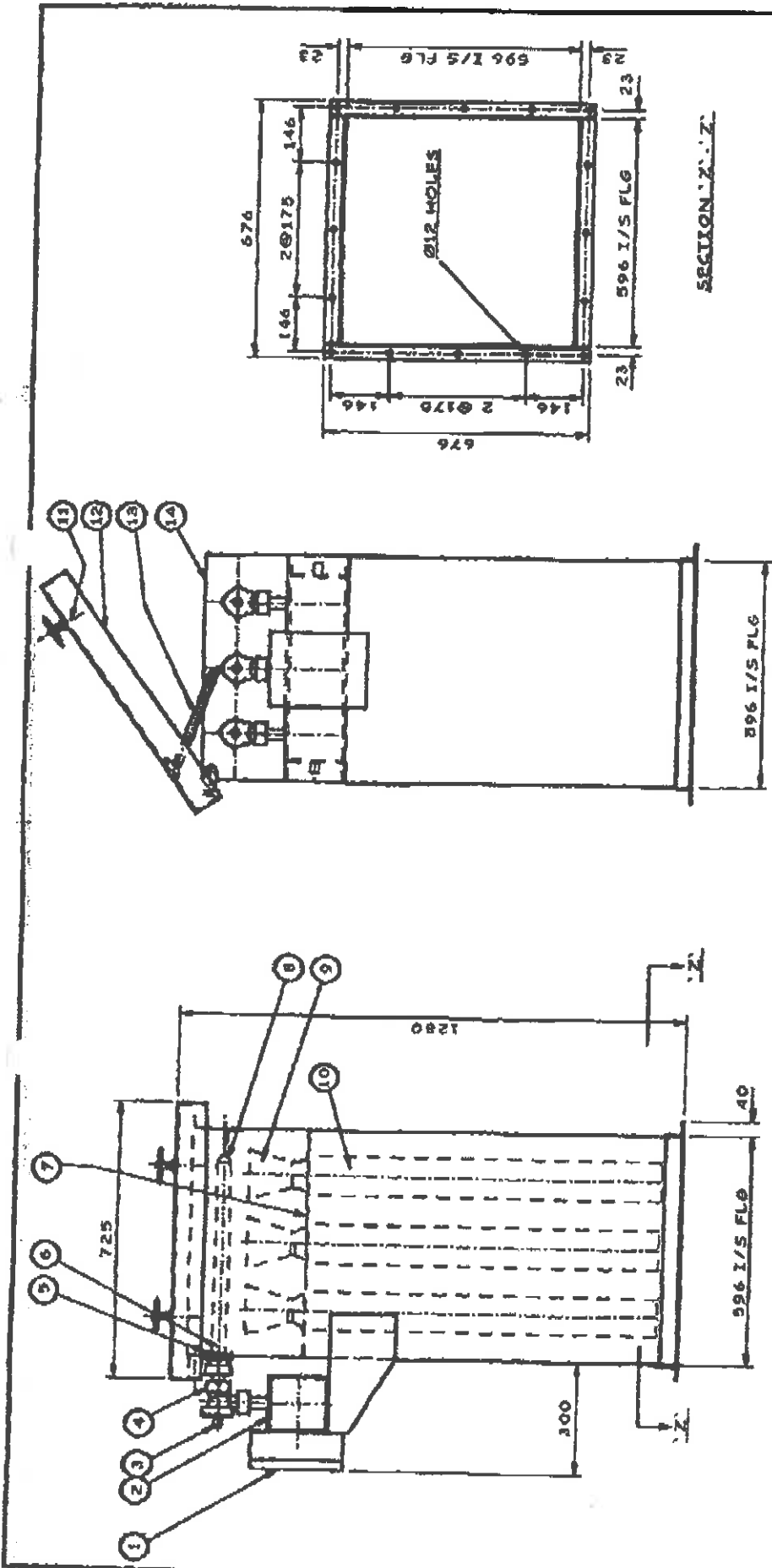
**Filter Housing:** A filter housing is included manufactured in an all welded panel construction from 3 mm mild steel plate and give vertical filter removal through access doors at the top of the filter. The base of the filter housing is fitted with a rolled steel section mounting flange.

PRICE

Our price for the above specified equipment would be:- £1,585.00 (One Thousand, Five Hundred and Eighty Five Pounds) ex works,

**ONE:** 3mm filter upstand x 300 long approx with matching flange.  
PRICE: £98.00 (Ninety Eight Pounds)

Cont'd.....



ITEM	PART NO.	DESCRIPTION	QTY	REMARKS
1		SEQUENTIAL CONT	1	C/W 4WAY PCB & 1 SOLENOID VALVES
2	634012	COMPRESSED AIR TANK	1	1/2" BSP SOCKETS
3		DIAPHRAGM VALVE	3	RCALDOD
4		BALL THREAD CONNECTIONS	3	ØHROB
5	674012	WASHER WASHER	3	
6	674012	CONNECTING TUBE	3	
7		HANDWHEEL/HAUD	4	C/W WASHER
8	674012	SLOW TUBE	3	
9	674012	VENTURE SUPPORT PLATE	4	
10		CANTILEVER & SEAL	4	
11		T-HANDLING LATION	2	Ø8-Ø6-Ø11-30
12	674012	COVER PLATE	1	
13		COVER SUPPORT	2	
14	674011	CASE	1	ØUTOMATIC WITH LOCK

Drawing refers to the original nomenclature of any other or adaptation. DO not refer to the device. not

This drawing is the property of Herston Green (Dust Collector) Ltd. and shall not be copied or reproduced in any form without the written permission of Herston Green (Dust Collector) Ltd. or its agents.

DESIGNER	A. J. COCHRAN	DATE	17-02-98
CHECKED	A. J.	DATE	17-02-98
APPROVED	L. J.	DATE	17-02-98
GENERAL ARRANGEMENT OF GARBAGE FLTR/232			
Material: Steel (Blued Corrosion) Ltd			
Drawing No: 901473433062			
Drawing No: 901473433062			