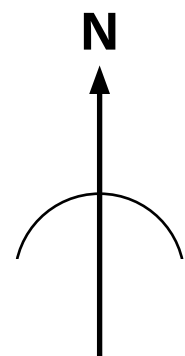


Enjoy an outdoor walk

Christchurch Park Walking Routes



Christchurch Park was the first public park in Ipswich and is the most central, located just a five-minute walk from the busy Town Centre. The park, which has won many Green Flag Awards, contains a large play area, visitor centre, Café, Ice Cream Kiosks, Historic Mansion, ponds and fountain and acres of green space to explore.

These walks aim to show you some of the best features of the park but there is still plenty to explore outside of these suggested Walks. Please be advised that some paths may be wet, steep or have uneven terrain including steps. In the Arboretum, bird reserve and wildlife areas around the ponds please keep your dog on a lead and keep to the designated paths to avoid disturbing wildlife.

On any of these walks you can visit Mabel the Owl's tree and see if the famous tawny owl is at home in the hollow right at the very top of the tree. Look for the carved wooden owl to show you where to look.

— Approx. 2.2km - 1hr 10min

— Approx. 1.3km - 55min

— Approx. 2km - 1hr

- - - - - Approx. 2km - 1hr

o o o o o Perimeter Walk Approx. 2.5km - 32min

S Walk Start Point

● Park Entrance



IPSWICH
BOROUGH COUNCIL

For more information about Ipswich's Parks visit www.ipswich.gov.uk