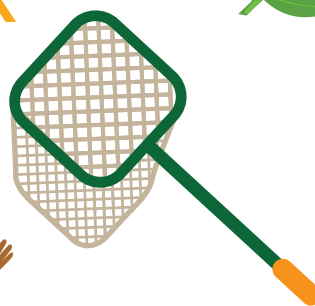
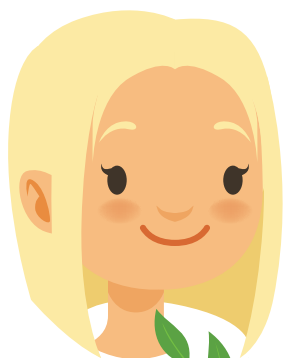


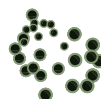


Holywells Park Ipswich

Rangers Activity Pack



Friends of
Holywells Park



Contents

Introduction to Holywells Park

1 Lifecycles

ACTIVITY 1 LIFE CYCLE WHEEL

ACTIVITY 2 LIFE CYCLES

ACTIVITY 3 BUG BOXES

2 Adaptions

ACTIVITY 1 CATERPILLAR CAMOUFLAGE

ACTIVITY 2 BEAKS GAME

3 Wildlife

ACTIVITY 1 WILDLIFE PHOTOGRAPHY

ACTIVITY 2 TRAIL CAMERAS

ACTIVITY 3 FOOTPRINT TRAPS

4 Habitats

ACTIVITY 1 POND DIPPING

ACTIVITY 2 UNDERWATER CAMERA

ACTIVITY 3 WATER CYCLE ACT OUT

ACTIVITY 4 TREE MEASUREMENTS (KS1 & KS2)

ACTIVITY 5 WOODLAND BUG HUNT

ACTIVITY 6 TREE RUBBINGS

ACTIVITY 7 FUNGI TRAIL

ACTIVITY 8 BUG HUNT

ACTIVITY 9 FLOWER TRAIL KS1

ACTIVITY 10 FLOWER TRAIL KS2

BASIC FLOWER ID SHEET

5 Soil

- ACTIVITY 1 SOIL RECIPE
- ACTIVITY 2 SOIL PARTICLE TRAIL

6 Sensory Activities

- ACTIVITY 1 SMELLY COCKTAILS
- ACTIVITY 2 LEAF SLIDES
- ACTIVITY 3 MIRRORS
- ACTIVITY 4 UNNATURE TRAIL
- ACTIVITY 5 FEELY TRAIL
- ACTIVITY 6 SILENT SHARING WALK
- ACTIVITY 7 TOUCH CARDS
- ACTIVITY 8 PYRAMID OF LIFE
- ACTIVITY 9 OWLS AND CROWS
- ACTIVITY 10 THE GERMINATION GAME
- ACTIVITY 11 BUILD A PEOPLE TREE
- ACTIVITY 12 IMAGERY
- ACTIVITY 13 JOURNEY MAP

7 Energy

- ACTIVITY 1 SOLAR SYSTEM SIZE UP
- ACTIVITY 2 HOLYWELLS FOOD WEBS
- ACTIVITY 3 ENERGY CURRENCY

8 Seasons

- ACTIVITY 1 HIBERNATION STRATEGIES

Holywells Park

Holywells Park is a 67 acre (27 hectares) park in Ipswich. It is on the English Heritage Register of Historic Parks and Gardens of Special Historic Interest and is designated a Conservation Area. The Stable Block and conservatory are both listed buildings. Holywells has been designated a Regionally Important Geodiversity Site (RIGS) and a County Wildlife Site.

Holywells Park has a long history going back thousands of years - tools from the Stone Age have been found on the site and Bronze Age axes and Roman coins have been found nearby. It is the remarkable natural springs that give Holywells its character and have shaped its history.

The current parkland dates from the 13th century under the ownership of the Bishops of Norwich and was famously painted by Thomas Gainsborough circa 1748.



Please contact Holywells Park on **01473 433990**, holywells.recip@ipswich.gov.uk to inform us of your visit. This avoids double booking as there are limited resources in the park and helps us keep a record of the number of groups using the parks for environmental education.

If you would like to book a Wildlife Ranger for your visit please contact us using the information above to discuss your visit.

WILDLIFE

Holywells is a large open space, with a diverse mixture of woodland, parkland trees, grassland and ponds. The long grass and wildflower areas and the retention of deadwood and grass cuttings provide additional habitat in the park. All these habitats provide homes for a diverse range of wildlife.

THE EDUCATIONAL MATERIAL

Ipswich Borough Council's Wildlife and Education Rangers offer a variety of activities across the different areas of Holywells Park. The emphasis is very much on encouraging children to discover the environment for themselves and have fun in the process. The activities contained in this pack cover a range of environmental themes that seek to develop awareness, understanding and respect for the natural environment. This creates a sense of personal responsibility, which encourages children, and the wider community, to look after and improve the environment in which they live.

The activities follow the Key Stage 1 (5-7 y/o) and 2 (7-11 y/o) curriculum for science. It also aims to incorporate many other topics such as geography and maths. Although some elements are aimed primarily at schools, other groups will enjoy many of the activities. There are also some sensory activities to awaken curiosity and observation as we explore the natural world. Many can be linked together in a sequence following a nature or tree trail, and can encourage creative writing. Some activities may act as guidelines and help to generate your own ideas. You can use these ideas to form a lesson plan both in and out of the classroom.

This pack contains some ideas, information and activities that can be used in the park. It will enable you to design your own fun nature day/lesson plan and lead activities yourself. There are sheets for some activities which can be accessed online and printed. These are for recording and identifying what you find.

The review section encourages the students to engage in discussion over the topics and develop different ideas amongst themselves.

STAYING SAFE IN THE PARK

Most activities can be undertaken by the teacher/group leader.

For pond-dipping and bug-hunting it would be preferable for the session to be pre-booked and carried out with the assistance of a Wildlife Ranger who will also provide the appropriate equipment.

- When organising your trip we recommend a group size of no more than 15 children to one group leader/supervisor
- Most of the park is accessible for people in wheelchairs or those with walking difficulties. If special requirements are needed, it's best to check your route beforehand
- Specific health and safety measures are covered for each activity and it is recommended that groups complete their own risk assessment