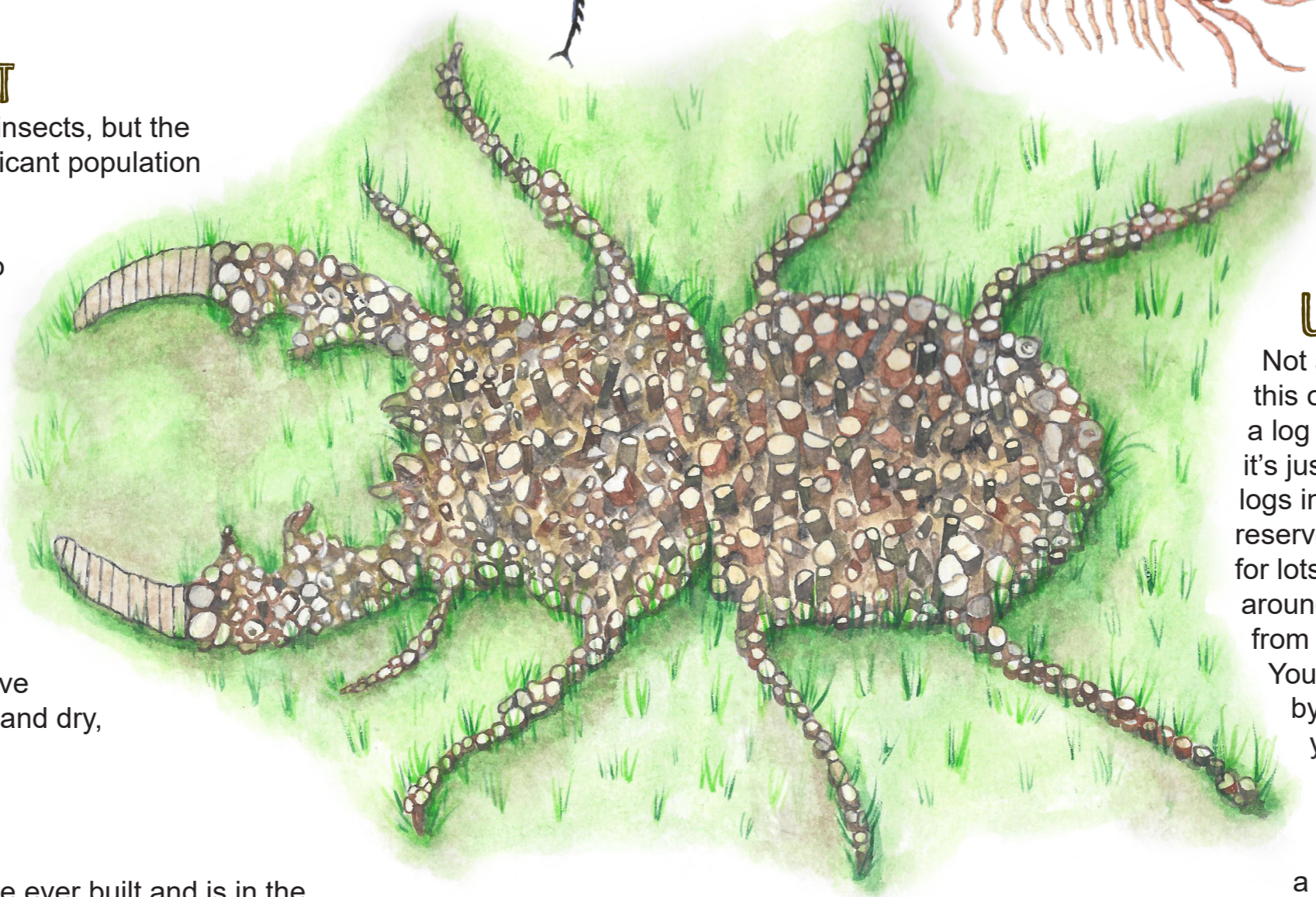
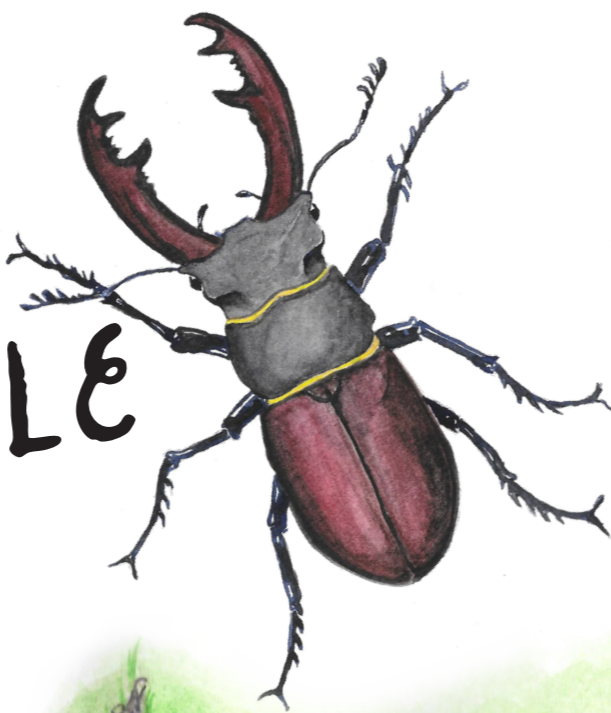


THE GIANT STAG BEETLE PILE



A MAGNIFICENT INSECT

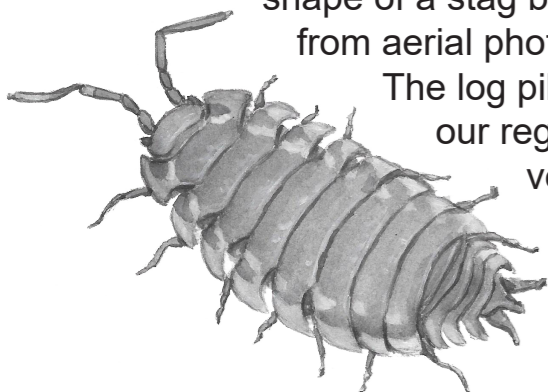
Stag beetles are nationally scarce insects, but the Ipswich area holds a globally significant population of this magnificent insect.

All of our nature reserves have log habitat piles buried in the ground to simulate tree stumps – providing the ideal conditions for this species. The beetle spends most of its life (5-7 years) as a large white grub, eating dead wood, before metamorphosing into the spectacular flying machine that can be seen in May and June evenings. Due to this long time spent eating dead wood, there needs to be a continuous supply of wood that allows the larva to move deeper underground when it is hot and dry, or above ground when it is wet.

THE HABITAT PILE

This habitat pile is the biggest we've ever built and is in the shape of a stag beetle – large enough to be visible from aerial photographs!

The log pile was built during May and June 2023 and involved our regular Greenways and Ipswich Wildlife Group volunteers, staff volunteer groups, the Friends of Belstead Brook Park and Suffolk Wildlife Trust groups.



Created by:



GREENWAYS
countryside project

in partnership with:



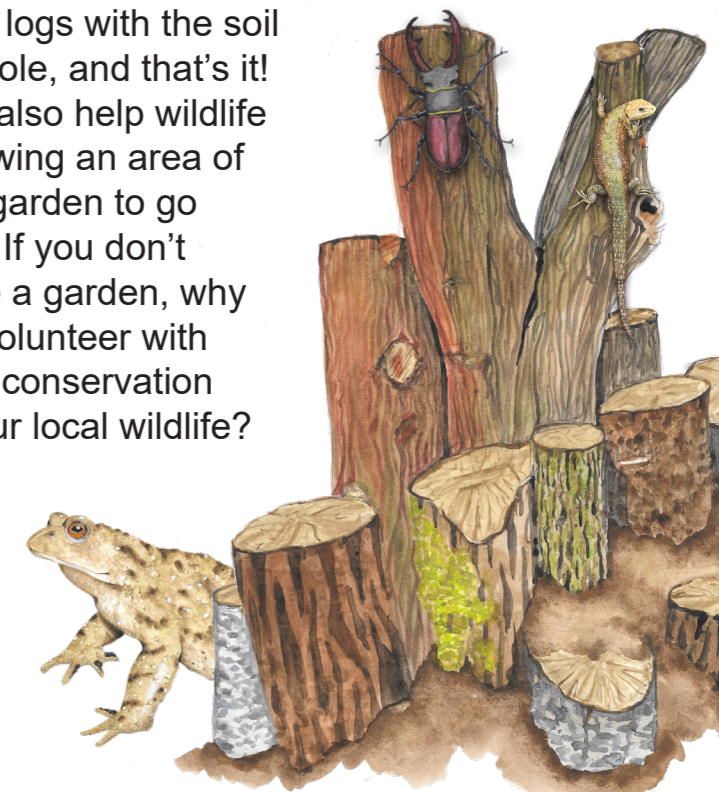
OTHER RESIDENTS

It's not just stag beetles that will benefit from this giant habitat pile. Many other species will make this pile their home - from other invertebrates like centipedes, woodlice and other beetles, to amphibians like toads and newts who will overwinter here. Reptiles such as grass snakes and slow worms will also use this pile to hibernate and to bask on in the summer.

WHAT YOU CAN DO TO HELP

Not all stag beetle piles need to be as big as this one. You can help a stag beetle by creating a log pile of any size in your garden, even if it's just one log! Just dig a hole and place your logs into it (but don't take logs from nature reserves and parks - these will already be homes for lots of wildlife!). Fill up around the logs with the soil from the hole, and that's it!

You can also help wildlife by allowing an area of your garden to go wild! If you don't have a garden, why not volunteer with a local conservation group to help your local wildlife?



For more information contact:
greenways.project@ipswich.gov.uk or visit
www.wildipswich.org

Please report any stag beetle sightings to PTES:
www.stagbeetles.ptes.org